

Product datasheet for **TA308149**

Aspartyl Aminopeptidase (DNPEP) Rabbit Polyclonal Antibody

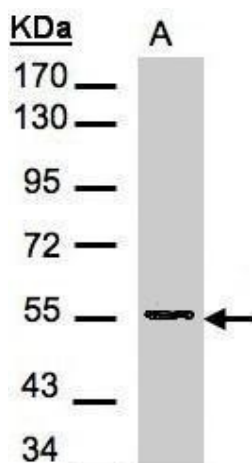
Product data:

Product Type:	Primary Antibodies
Applications:	IHC, WB
Recommended Dilution:	IHC:1:100-1:1000; WB:1:500-1:3000
Reactivity:	Human (Predicted: Mouse, Pig, Rat, Bovine)
Host:	Rabbit
Isotype:	IgG
Clonality:	Polyclonal
Immunogen:	Recombinant fragment corresponding to a region within amino acids 1 and 225 of Aspartyl aminopeptidase (Uniprot ID#Q9ULA0)
Formulation:	0.1M Tris, 0.1M Glycine, 10% Glycerol (pH7). 0.01% Thimerosal was added as a preservative.
Concentration:	lot specific
Purification:	Purified by antigen-affinity chromatography.
Conjugation:	Unconjugated
Storage:	Store at -20°C as received.
Stability:	Stable for 12 months from date of receipt.
Predicted Protein Size:	53 kDa
Gene Name:	aspartyl aminopeptidase
Database Link:	NP_036232 Entrez Gene 13437 Mouse Entrez Gene 301529 Rat Entrez Gene 23549 Human Q9ULA0
Background:	The protein encoded by this gene is an aminopeptidase which prefers acidic amino acids, and specifically favors aspartic acid over glutamic acid. It is thought to be a cytosolic protein involved in general metabolism of intracellular proteins. [provided by RefSeq]
Synonyms:	ASPEP; DAP
Note:	Seq homology of immunogen across species: Mouse (89%), Pig (94%), Rat (89%), Bovine (94%)
Protein Families:	Druggable Genome, Protease

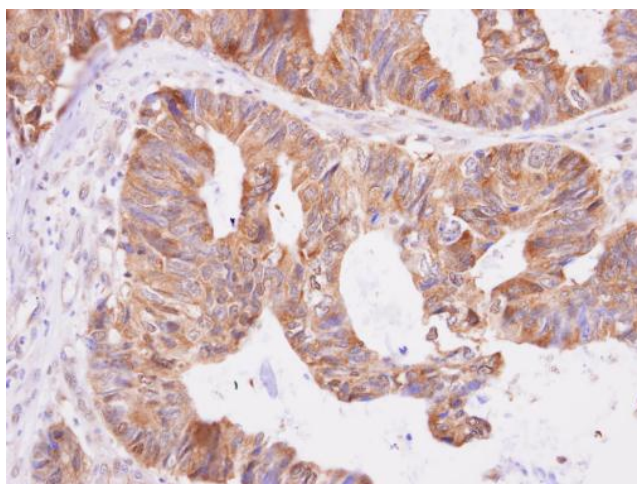


[View online »](#)

Product images:



Sample (30 ug of whole cell lysate). A:H1299.
7.5% SDS PAGE. TA308149 diluted at 1:500



Aspartyl aminopeptidase antibody [N1N3] detects Aspartyl aminopeptidase protein at cytoplasm on colon carcinoma by immunohistochemical analysis. Sample: Paraffin-embedded colon carcinoma. Aspartyl aminopeptidase antibody [N1N3] (TA308149) dilutio