

## Product datasheet for **TA308148**

### CPVL Rabbit Polyclonal Antibody

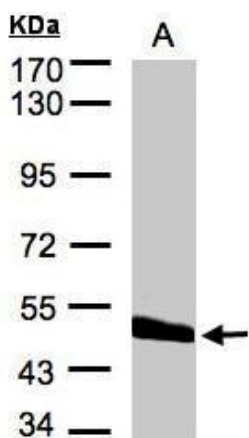
#### Product data:

Product Type:	Primary Antibodies
Applications:	WB
Recommended Dilution:	WB:1:500-1:3000
Reactivity:	Human
Host:	Rabbit
Isotype:	IgG
Clonality:	Polyclonal
Immunogen:	Recombinant fragment corresponding to a region within amino acids 54 and 461 of CPVL (Uniprot ID#Q9H3G5)
Formulation:	0.1M Tris, 0.1M Glycine, 10% Glycerol (pH7). 0.01% Thimerosal was added as a preservative.
Concentration:	lot specific
Purification:	Purified by antigen-affinity chromatography.
Conjugation:	Unconjugated
Storage:	Store at -20°C as received.
Stability:	Stable for 12 months from date of receipt.
Predicted Protein Size:	54 kDa
Gene Name:	carboxypeptidase, vitellogenic like
Database Link:	<a href="#">NP_061902</a> <a href="#">Entrez Gene 54504 Human</a> <a href="#">Q9H3G5</a>
Background:	The protein encoded by this gene is a carboxypeptidase and bears strong sequence similarity to serine carboxypeptidases. Carboxypeptidases are a large class of proteases that act to cleave a single amino acid from the carboxy termini of proteins or peptides. The exact function of this protein, however, has not been determined. At least two alternatively spliced transcripts which encode the same protein have been observed. [provided by RefSeq]
Synonyms:	HVLP
Protein Families:	Druggable Genome, Protease



[View online »](#)

## Product images:



Sample (30 ug of whole cell lysate). A:Hep G2.  
7.5% SDS PAGE. TA308148 diluted at 1:2000