

Product datasheet for **TA308147**

GK5 Rabbit Polyclonal Antibody

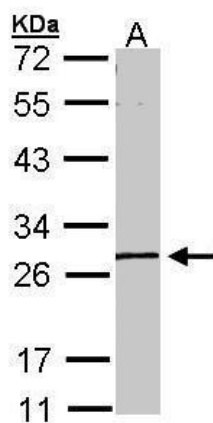
Product data:

Product Type:	Primary Antibodies
Applications:	IHC, WB
Recommended Dilution:	IHC:1:100-1:1000; WB:1:500-1:3000
Reactivity:	Human (Predicted: Cow)
Host:	Rabbit
Isotype:	IgG
Clonality:	Polyclonal
Immunogen:	Recombinant protein fragment contain a sequence corresponding to a region within amino acids 9 and 297 of GK5
Formulation:	0.1M Tris, 0.1M Glycine, 10% Glycerol (pH7). 0.01% Thimerosal was added as a preservative.
Concentration:	lot specific
Purification:	Purified by antigen-affinity chromatography.
Conjugation:	Unconjugated
Storage:	Store at -20°C as received.
Stability:	Stable for 12 months from date of receipt.
Predicted Protein Size:	34 kDa
Gene Name:	glycerol kinase 5 (putative)
Database Link:	NP_001034636 Entrez Gene 256356 Human Q6ZS86
Synonyms:	RP11-485G4.2
Note:	Seq homology of immunogen across species: cow (84%)
Protein Families:	Druggable Genome

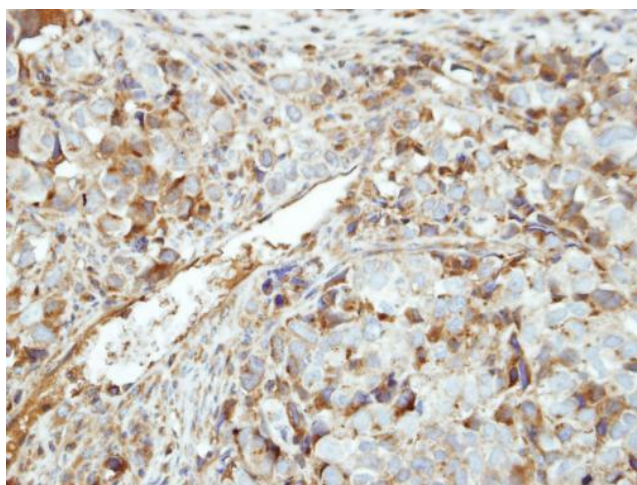


[View online »](#)

Product images:



Sample (30 ug of whole cell lysate). A: A431. 10% SDS PAGE. TA308147 diluted at 1:1000



Immunohistochemical analysis of paraffin-embedded CL1-0 xenograft, using GK5 (TA308147) antibody at 1:500 dilution.