

Product datasheet for **TA308146**

Calcium binding protein P22 (CHP1) Rabbit Polyclonal Antibody

Product data:

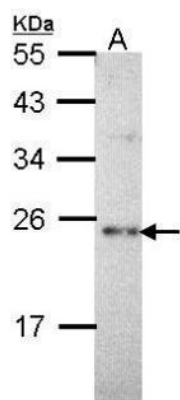
Product Type:	Primary Antibodies
Applications:	IF, IHC, WB
Recommended Dilution:	ICC/IF:1:100-1:1000; IHC:1:100-1:1000; WB:1:500-1:3000
Reactivity:	Human (Predicted: Rat)
Host:	Rabbit
Isotype:	IgG
Clonality:	Polyclonal
Immunogen:	Synthetic peptide corresponding to a region within amino acids 47 and 141 of Calcium binding protein P22 (Uniprot ID#Q99653)
Formulation:	0.1M Tris, 0.1M Glycine, 10% Glycerol (pH7). 0.01% Thimerosal was added as a preservative.
Purification:	Purified by antigen-affinity chromatography.
Conjugation:	Unconjugated
Storage:	Store at -20°C as received.
Stability:	Stable for 12 months from date of receipt.
Predicted Protein Size:	22 kDa
Gene Name:	calcineurin like EF-hand protein 1
Database Link:	NP_009167 Entrez Gene 64152 Rat Entrez Gene 11261 Human Q99653
Background:	This gene encodes a phosphoprotein that binds to the Na ⁺ /H ⁺ exchanger NHE1. This protein serves as an essential cofactor which supports the physiological activity of NHE family members and may play a role in the mitogenic regulation of NHE1. The protein shares similarity with calcineurin B and calmodulin and it is also known to be an endogenous inhibitor of calcineurin activity. [provided by RefSeq]
Synonyms:	CHP; p22; p24; Sid470p; SLC9A1BP
Note:	Seq homology of immunogen across species: Rat (100%)



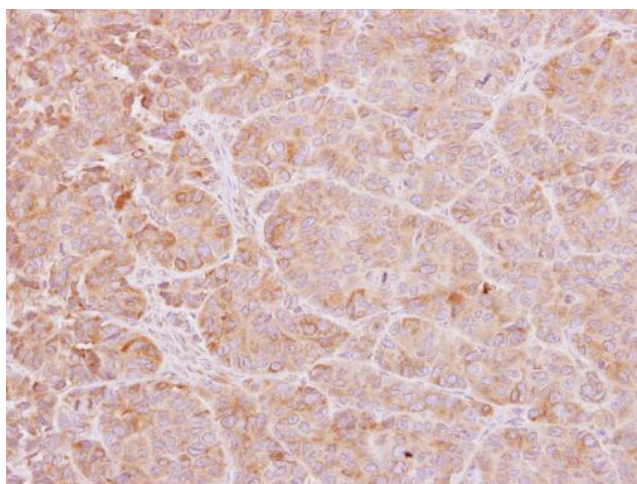
[View online »](#)

Protein Pathways:

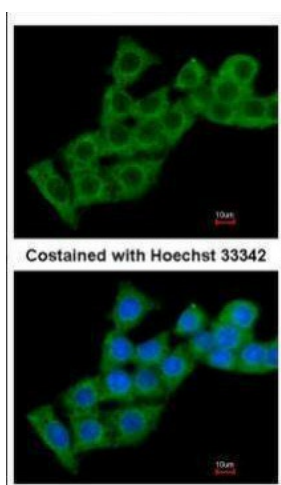
Alzheimer's disease, Amyotrophic lateral sclerosis (ALS), Apoptosis, Axon guidance, B cell receptor signaling pathway, Calcium signaling pathway, Long-term potentiation, MAPK signaling pathway, Natural killer cell mediated cytotoxicity, Oocyte meiosis, T cell receptor signaling pathway, VEGF signaling pathway, Wnt signaling pathway

Product images:

Sample (30 ug of whole cell lysate). A: Hep G2. 12% SDS PAGE. TA308146 diluted at 1:1000.



Calcium binding protein P22 antibody [N2C2], Internal detects Calcium binding protein P22 protein at cytoplasm on SW480 xenograft by immunohistochemical analysis. Sample: Paraffin-embedded SW480 xenograft. Calcium binding protein P22 antibody [N2C



Immunofluorescence analysis of methanol-fixed HepG2, using Calcium binding protein P22 (TA308146) antibody at 1:200 dilution.