

Product datasheet for **TA308144**

SMC1L2 (SMC1B) Rabbit Polyclonal Antibody

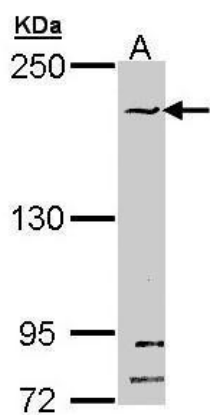
Product data:

Product Type:	Primary Antibodies
Applications:	IF, IHC, WB
Recommended Dilution:	ICC/IF:1:100-1:1000; IHC:1:100-1:1000; WB:1:500-1:3000
Reactivity:	Human
Host:	Rabbit
Isotype:	IgG
Clonality:	Polyclonal
Immunogen:	Recombinant fragment corresponding to a region within amino acids 154 and 433 of SMC1B (Uniprot ID#Q8NDV3)
Formulation:	0.1M Tris, 0.1M Glycine, 10% Glycerol (pH7). 0.01% Thimerosal was added as a preservative.
Concentration:	lot specific
Purification:	Purified by antigen-affinity chromatography.
Conjugation:	Unconjugated
Storage:	Store at -20°C as received.
Stability:	Stable for 12 months from date of receipt.
Predicted Protein Size:	144 kDa
Gene Name:	structural maintenance of chromosomes 1B
Database Link:	NP_683515 Entrez Gene 27127 Human Q8NDV3
Background:	SMC1L2 belongs to a family of proteins required for chromatid cohesion and DNA recombination during meiosis and mitosis (3:Revenkova et al., 2001 [PubMed 11564881]). [supplied by OMIM]
Synonyms:	SMC1BETA; SMC1L2
Protein Pathways:	Cell cycle, Oocyte meiosis

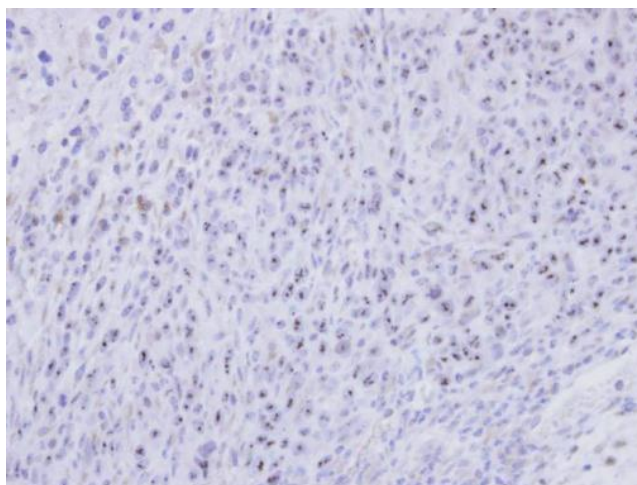


[View online »](#)

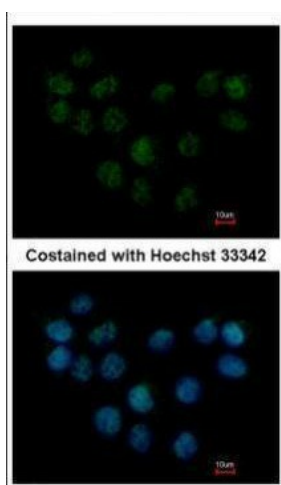
Product images:



Sample (30 ug of whole cell lysate). A: HeLa. 5% SDS PAGE. TA308144 diluted at 1:1000.



Immunohistochemical analysis of paraffin-embedded SAS xenograft, using SMC1B (TA308144) antibody at 1:500 dilution.



Immunofluorescence analysis of paraformaldehyde-fixed A431, using SMC1B (TA308144) antibody at 1:500 dilution.