

Product datasheet for **TA308142**

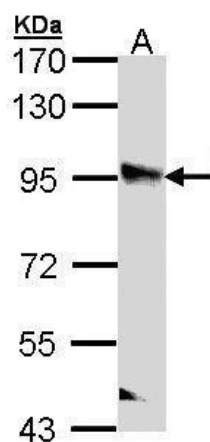
PPFIBP2 Rabbit Polyclonal Antibody

Product data:

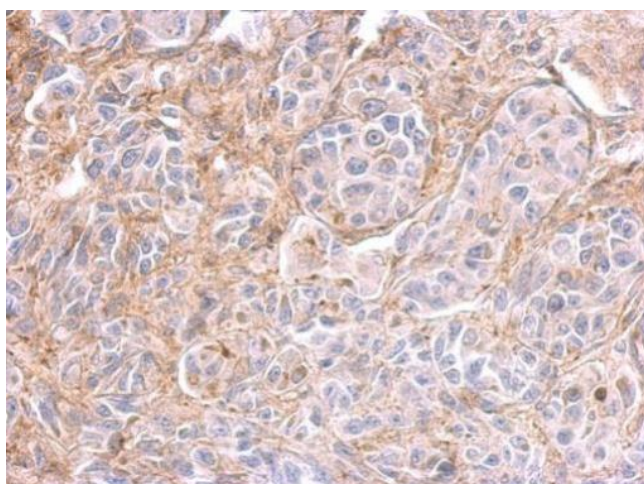
Product Type:	Primary Antibodies
Applications:	IF, IHC, WB
Recommended Dilution:	ICC/IF:1:100-1:1000; IHC:1:100-1:1000; WB:1:500-1:3000
Reactivity:	Human
Host:	Rabbit
Isotype:	IgG
Clonality:	Polyclonal
Immunogen:	Recombinant fragment corresponding to a region within amino acids 120 and 392 of PPFIBP2 (Uniprot ID#Q8ND30)
Formulation:	0.1M Tris, 0.1M Glycine, 10% Glycerol (pH7). 0.01% Thimerosal was added as a preservative.
Concentration:	lot specific
Purification:	Purified by antigen-affinity chromatography.
Conjugation:	Unconjugated
Storage:	Store at -20°C as received.
Stability:	Stable for 12 months from date of receipt.
Predicted Protein Size:	98 kDa
Gene Name:	PPFIA binding protein 2
Database Link:	NP_003612 Entrez Gene 8495 Human Q8ND30
Background:	PPFIBP2, or liprin-beta-2, belongs to the liprin-beta family. See liprin-beta-1 (MIM 603141) for background on liprins. [supplied by OMIM]
Synonyms:	Cclp1



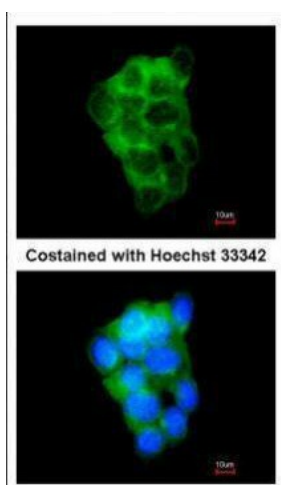
[View online »](#)

Product images:

Sample (30 ug of whole cell lysate). A: A431. 7.5% SDS PAGE. TA308142 diluted at 1:1000.



PPFIBP2 antibody detects PPFIBP2 protein at on SkHep1 xenograft by immunohistochemical analysis. Sample: Paraffin-embedded SkHep1 xenograft. PPFIBP2 antibody (TA308142) dilution: 1:500.



Immunofluorescence analysis of methanol-fixed A431, using PPFIBP2 (TA308142) antibody at 1:200 dilution.