

## Product datasheet for **TA308139**

### **BBS12 Rabbit Polyclonal Antibody**

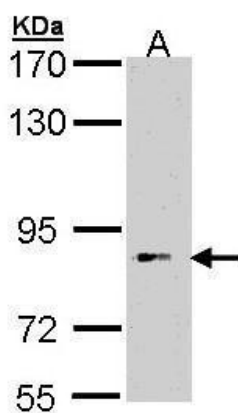
#### **Product data:**

Product Type:	Primary Antibodies
Applications:	WB
Recommended Dilution:	WB:1:500-1:3000
Reactivity:	Human
Host:	Rabbit
Isotype:	IgG
Clonality:	Polyclonal
Immunogen:	Recombinant fragment corresponding to a region within amino acids 401 and 691 of FLJ35630 (Uniprot ID#Q6ZW61)
Formulation:	0.1M Tris, 0.1M Glycine, 10% Glycerol (pH7). 0.01% Thimerosal was added as a preservative.
Concentration:	lot specific
Purification:	Purified by antigen-affinity chromatography.
Conjugation:	Unconjugated
Storage:	Store at -20°C as received.
Stability:	Stable for 12 months from date of receipt.
Predicted Protein Size:	79 kDa
Gene Name:	Bardet-Biedl syndrome 12
Database Link:	<a href="#">NP_689831</a> <a href="#">Entrez Gene 166379 Human</a> <a href="#">Q6ZW61</a>
Synonyms:	C4orf24



[View online »](#)

## Product images:



Sample (30 ug of whole cell lysate). A: Hep G2.  
7.5% SDS PAGE. TA308139 diluted at 1:1000.