

Product datasheet for **TA308138**

Glypican 5 (GPC5) Rabbit Polyclonal Antibody

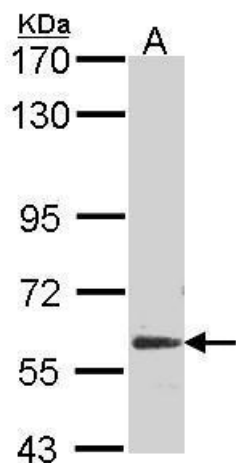
Product data:

Product Type:	Primary Antibodies
Applications:	WB
Recommended Dilution:	WB:1:500-1:3000
Reactivity:	Human (Predicted: Mouse, Rat, Bovine)
Host:	Rabbit
Isotype:	IgG
Clonality:	Polyclonal
Immunogen:	Recombinant fragment corresponding to a region within amino acids 188 and 550 of Glypican 5 (Uniprot ID#P78333)
Formulation:	0.1M Tris, 0.1M Glycine, 10% Glycerol (pH7). 0.01% Thimerosal was added as a preservative.
Concentration:	lot specific
Purification:	Purified by antigen-affinity chromatography.
Conjugation:	Unconjugated
Storage:	Store at -20°C as received.
Stability:	Stable for 12 months from date of receipt.
Predicted Protein Size:	64 kDa
Gene Name:	glypican 5
Database Link:	NP_004457 Entrez Gene 103978 MouseEntrez Gene 306157 RatEntrez Gene 2262 Human P78333
Background:	Cell surface heparan sulfate proteoglycans are composed of a membrane-associated protein core substituted with a variable number of heparan sulfate chains. Members of the glypican-related integral membrane proteoglycan family (GRIPS) contain a core protein anchored to the cytoplasmic membrane via a glycosyl phosphatidylinositol linkage. These proteins may play a role in the control of cell division and growth regulation. [provided by RefSeq]
Synonyms:	bA93M14.1; glypican 5; glypican proteoglycan 5; OTTHUMP00000018551
Note:	Seq homology of immunogen across species: Mouse (86%), Rat (85%), Bovine (90%)



[View online »](#)

Product images:



Sample (30 ug of whole cell lysate). A: NT2D1.
7.5% SDS PAGE. Glypican 5 antibody. TA308138
diluted at 1:500.