

Product datasheet for **TA308137**

IP6K1 Rabbit Polyclonal Antibody

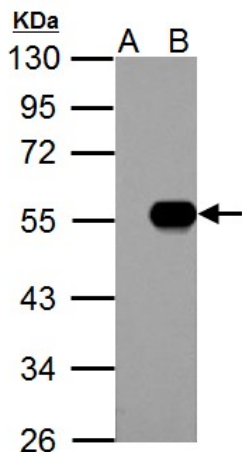
Product data:

Product Type:	Primary Antibodies
Applications:	IF, IHC, WB
Recommended Dilution:	ICC/IF:1:100-1:1000; IHC:1:100-1:1000; WB:1:1000-1:10000
Reactivity:	Human
Host:	Rabbit
Isotype:	IgG
Clonality:	Polyclonal
Immunogen:	Recombinant fragment corresponding to a region within amino acids 50 and 309 of IP6K1 (Uniprot ID#Q92551)
Formulation:	1XPBS, 1% BSA, 20% Glycerol (pH7). 0.025% ProClin 300 was added as a preservative.
Concentration:	lot specific
Purification:	Purified by antigen-affinity chromatography.
Conjugation:	Unconjugated
Storage:	Store at -20°C as received.
Stability:	Stable for 12 months from date of receipt.
Predicted Protein Size:	50 kDa
Gene Name:	inositol hexakisphosphate kinase 1
Database Link:	NP_001006115 Entrez Gene 9807 Human Q92551
Background:	This gene encodes a protein that belongs to the inositol phosphokinase (IPK) family. This protein is likely responsible for the conversion of inositol hexakisphosphate (InsP6) to diphosphoinositol pentakisphosphate (InsP7/PP-InsP5). It may also convert 1,3,4,5,6-pentakisphosphate (InsP5) to PP-InsP4. Alternative splicing occurs for this gene; however, the full-length nature of all transcript variants has not yet been described. [provided by RefSeq]
Synonyms:	IHPK1; PiUS
Protein Families:	Druggable Genome

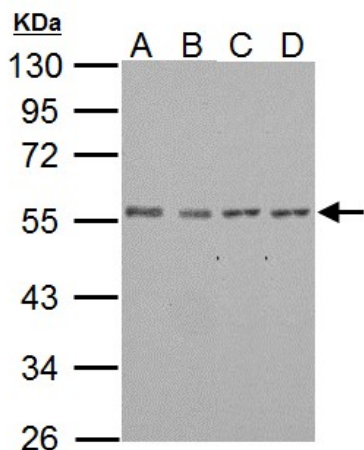


[View online »](#)

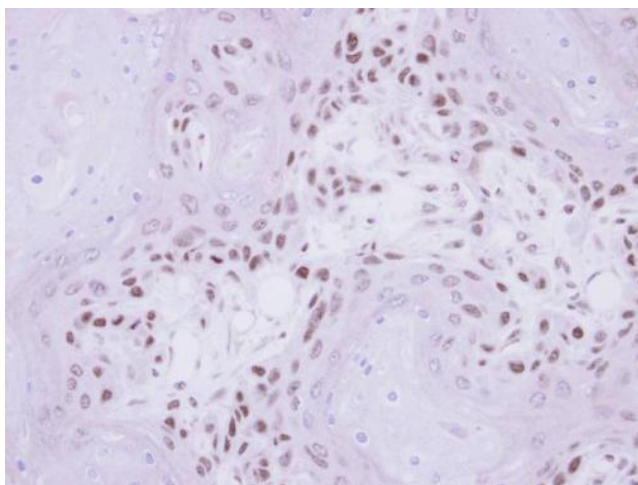
Product images:



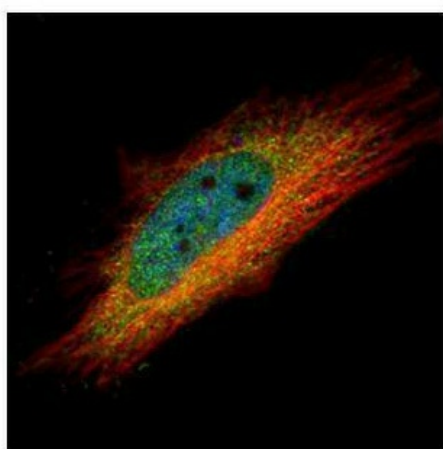
IP6K1 antibody detects IP6K1 protein by western blot analysis. A. 30 ug 293T whole cell lysate/extract. B. 30 ug whole cell lysate/extract of human IHPK1-transfected 293T cells. 10 % SDS-PAGE. IP6K1 antibody (TA308137) dilution: 1:5000



IP6K1 antibody detects IP6K1 protein by western blot analysis. A. 30 ug Jurkat whole cell lysate/extract. B. 30 ug Raji whole cell lysate/extract. C. 30 ug THP-1 whole cell lysate/extract. D. 30 ug NCI-H929 whole cell lysate/extract. 10 % SDS-PAGE. IP6K1



Immunohistochemical analysis of paraffin-embedded Ca922 Xenograft, using IP6K1 (TA308137) antibody at 1:500 dilution.



Confocal immunofluorescence analysis (Olympus FV10i) of paraformaldehyde-fixed HeLa, using IP6K1 (TA308137) antibody (Green) at 1:500 dilution. Alpha-tubulin filaments were labeled with anti-alpha tubulin antibody (Red) at 1:2000.