

Product datasheet for **TA308136**

NME5 Rabbit Polyclonal Antibody

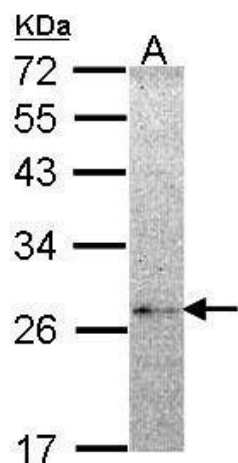
Product data:

Product Type:	Primary Antibodies
Applications:	WB
Recommended Dilution:	WB:1:500-1:3000
Reactivity:	Human, Mouse (Predicted: Bovine)
Host:	Rabbit
Isotype:	IgG
Clonality:	Polyclonal
Immunogen:	Recombinant fragment corresponding to a region within amino acids 1 and 212 of NME5 (Uniprot ID#P56597)
Formulation:	0.1M Tris, 0.1M Glycine, 10% Glycerol (pH7). 0.01% Thimerosal was added as a preservative.
Concentration:	lot specific
Purification:	Purified by antigen-affinity chromatography.
Conjugation:	Unconjugated
Storage:	Store at -20°C as received.
Stability:	Stable for 12 months from date of receipt.
Predicted Protein Size:	24 kDa
Gene Name:	NME/NM23 family member 5
Database Link:	NP_003542 Entrez Gene 75533 Mouse Entrez Gene 8382 Human P56597
Synonyms:	NM23-H5; NM23H5; RSPH23
Note:	Seq homology of immunogen across species: Bovine (88%)
Protein Families:	Druggable Genome
Protein Pathways:	Metabolic pathways, Purine metabolism, Pyrimidine metabolism

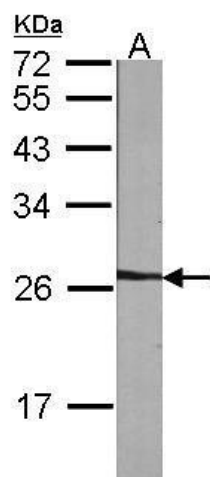


[View online »](#)

Product images:



Sample (30 ug of whole cell lysate). A: HeLa. 12% SDS PAGE. NME5 antibody. TA308136 diluted at 1:1000.



Sample (30 ug of whole cell lysate). A:NIH-3T3. 12% SDS PAGE. TA308136 diluted at 1:1000.