

Product datasheet for **TA308135**

SRPX Rabbit Polyclonal Antibody

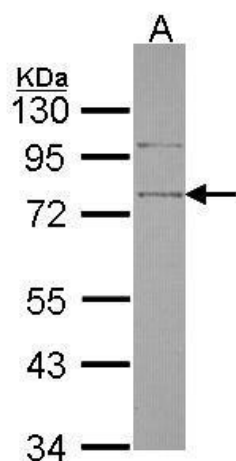
Product data:

Product Type:	Primary Antibodies
Applications:	IF, WB
Recommended Dilution:	ICC/IF:1:100-1:1000; WB:1:500-1:3000
Reactivity:	Human (Predicted: Rat, Bovine)
Host:	Rabbit
Isotype:	IgG
Clonality:	Polyclonal
Immunogen:	Recombinant fragment corresponding to a region within amino acids 231 and 464 of SRPX (Uniprot ID#P78539)
Formulation:	0.1M Tris, 0.1M Glycine, 20% Glycerol (pH7). 0.01% Thimerosal was added as a preservative.
Concentration:	lot specific
Purification:	Purified by antigen-affinity chromatography.
Conjugation:	Unconjugated
Storage:	Store at -20°C as received.
Stability:	Stable for 12 months from date of receipt.
Predicted Protein Size:	52 kDa
Gene Name:	sushi repeat containing protein, X-linked
Database Link:	NP_006298 Entrez Gene 64316 Rat Entrez Gene 8406 Human P78539
Synonyms:	DRS; ETX1; HEL-S-83p; SRPX1
Note:	Seq homology of immunogen across species: Rat (96%), Bovine (92%)

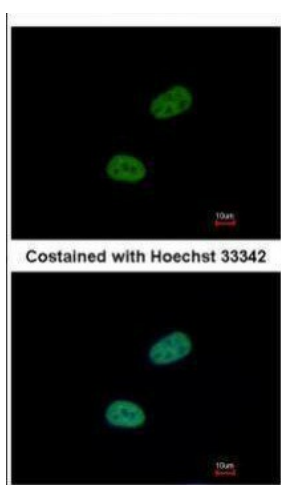


[View online »](#)

Product images:



Sample (30 ug of whole cell lysate). A: HeLa. 10% SDS PAGE. TA308135 diluted at 1:1000.



Immunofluorescence analysis of paraformaldehyde-fixed HeLa, using SRPX (TA308135) antibody at 1:500 dilution.