

Product datasheet for **TA308134**

SPG7 Rabbit Polyclonal Antibody

Product data:

Product Type:	Primary Antibodies
Applications:	WB
Recommended Dilution:	WB:1:500-1:3000
Reactivity:	Human, Mouse (Predicted: Chicken, Bovine)
Host:	Rabbit
Isotype:	IgG
Clonality:	Polyclonal
Immunogen:	Recombinant fragment corresponding to a region within amino acids 384 and 598 of SPG7 (Uniprot ID#Q9UQ90)
Formulation:	0.1M Tris, 0.1M Glycine, 20% Glycerol (pH7). 0.01% Thimerosal was added as a preservative.
Concentration:	lot specific
Purification:	Purified by antigen-affinity chromatography.
Conjugation:	Unconjugated
Storage:	Store at -20°C as received.
Stability:	Stable for 12 months from date of receipt.
Predicted Protein Size:	88 kDa
Gene Name:	SPG7, paraplegin matrix AAA peptidase subunit
Database Link:	NP_955399 Entrez Gene 234847 Mouse Entrez Gene 6687 Human Q9UQ90
Background:	This gene encodes a nuclear-encoded mitochondrial metalloprotease protein that is a member of the AAA (ATPases associated with a variety of cellular activities) protein family. Members of this protein family share an ATPase domain and have roles in diverse cellular processes including membrane trafficking, intracellular motility, organelle biogenesis, protein folding, and proteolysis. Two transcript variants encoding distinct isoforms have been identified for this gene. Mutations associated with this gene cause autosomal recessive spastic paraplegia 7. [provided by RefSeq]
Synonyms:	CAR; CMAR; PGN; SPG5C

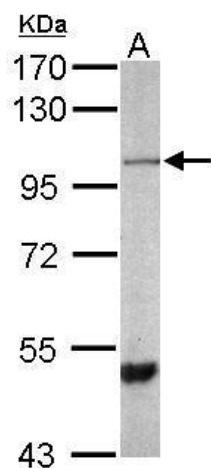


[View online »](#)

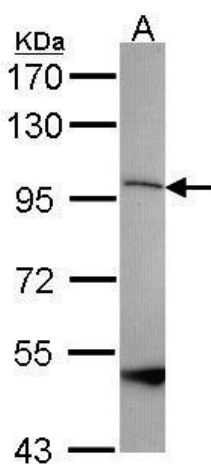
Note: Seq homology of immunogen across species: Chicken (85%), Bovine (90%)

Protein Families: Protease, Transmembrane

Product images:



Sample (50 ug of whole cell lysate). A: Mouse brain. 7.5% SDS PAGE. TA308134 diluted at 1:1000.



Sample (30 ug of whole cell lysate). A: 293T. 7.5% SDS PAGE. TA308134 diluted at 1:1000.