

## Product datasheet for **TA308130**

### LARS2 Rabbit Polyclonal Antibody

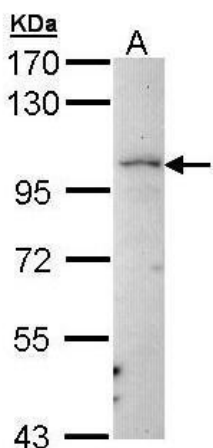
#### Product data:

Product Type:	Primary Antibodies
Applications:	IF, IHC, WB
Recommended Dilution:	ICC/IF:1:100-1:1000; IHC:1:100-1:1000; WB:1:1000-1:10000
Reactivity:	Human (Predicted: Mouse, Bovine)
Host:	Rabbit
Isotype:	IgG
Clonality:	Polyclonal
Immunogen:	Recombinant fragment corresponding to a region within amino acids 1 and 204 of LARS2 (Uniprot ID#Q15031)
Formulation:	0.1M Tris, 0.1M Glycine, 10% Glycerol (pH7). 0.01% Thimerosal was added as a preservative.
Concentration:	lot specific
Purification:	Purified by antigen-affinity chromatography.
Conjugation:	Unconjugated
Storage:	Store at -20°C as received.
Stability:	Stable for 12 months from date of receipt.
Predicted Protein Size:	102 kDa
Gene Name:	leucyl-tRNA synthetase 2, mitochondrial
Database Link:	<a href="#">NP_056155</a> <a href="#">Entrez Gene 102436 Mouse</a> <a href="#">Entrez Gene 23395 Human</a> <a href="#">Q15031</a>
Background:	This gene encodes a class 1 aminoacyl-tRNA synthetase, mitochondrial leucyl-tRNA synthetase. Each of the twenty aminoacyl-tRNA synthetases catalyzes the aminoacylation of a specific tRNA or tRNA isoaccepting family with the cognate amino acid. [provided by RefSeq]
Synonyms:	LEURS; PRLTS4
Note:	Seq homology of immunogen across species: Mouse (92%), Bovine (91%)
Protein Families:	Druggable Genome
Protein Pathways:	Aminoacyl-tRNA biosynthesis, Valine, leucine and isoleucine biosynthesis

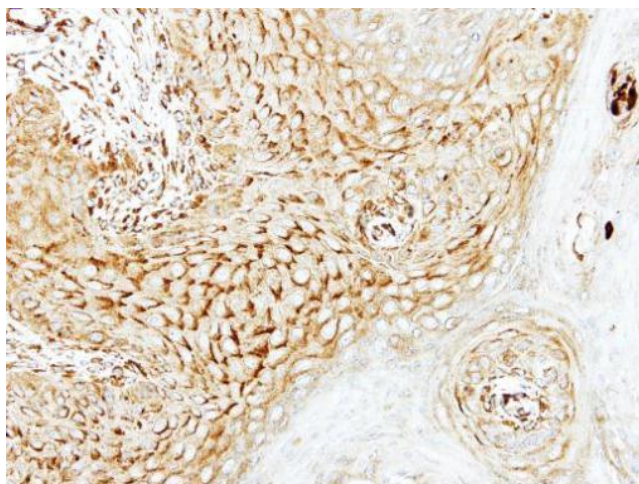


[View online »](#)

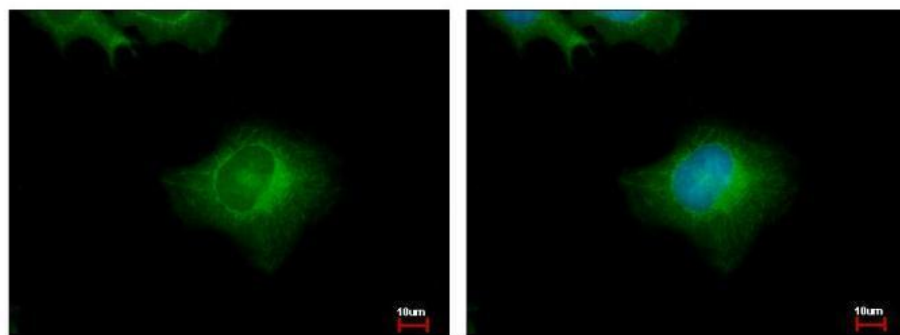
Product images:



Sample (30 ug of whole cell lysate). A: Raji. 7.5% SDS PAGE. TA308130 diluted at 1:5000



Immunohistochemical analysis of paraffin-embedded Cal27 xenograft, using LARS2 (TA308130) antibody at 1:500 dilution.



LARS2 antibody [N1N2], N-term detects LARS2 protein at mitochondria by immunofluorescent analysis. Sample: HeLa cells were fixed in 2% paraformaldehyde/culture medium at 37°C for 30min. Green: LARS2 protein stained by LARS2 antibody [N1N2], N-term (TA308