

Product datasheet for **TA308129**

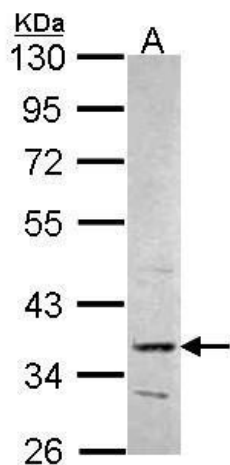
PRPS2 Rabbit Polyclonal Antibody

Product data:

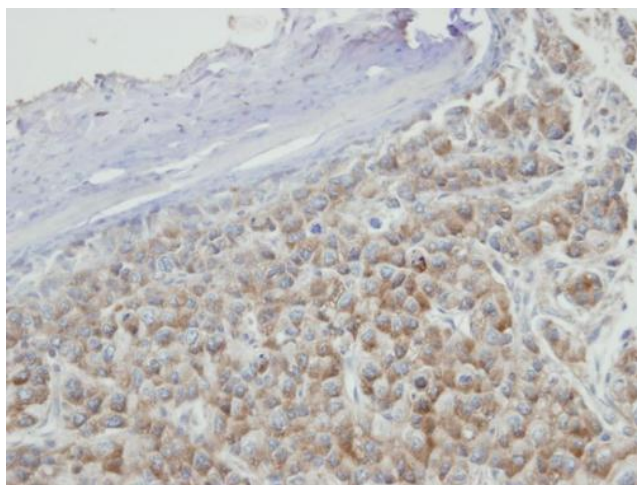
Product Type:	Primary Antibodies
Applications:	IF, IHC, WB
Recommended Dilution:	ICC/IF:1:100-1:1000; IHC:1:100-1:1000; WB:1:500-1:3000
Reactivity:	Human (Predicted: Mouse, Rat, Xenopus, Bovine, X. tropicalis)
Host:	Rabbit
Isotype:	IgG
Clonality:	Polyclonal
Immunogen:	Recombinant fragment contain a sequence corresponding to a region within amino acids 1 and 243 of PRPS2 (Uniprot ID#P11908)
Formulation:	0.1M Tris, 0.1M Glycine, 10% Glycerol (pH7). 0.01% Thimerosal was added as a preservative.
Purification:	Purified by antigen-affinity chromatography.
Conjugation:	Unconjugated
Storage:	Store at -20°C as received.
Stability:	Stable for 12 months from date of receipt.
Predicted Protein Size:	35 kDa
Gene Name:	phosphoribosyl pyrophosphate synthetase 2
Database Link:	NP_001034180 Entrez Gene 24689 Rat Entrez Gene 110639 Mouse Entrez Gene 5634 Human P11908
Synonyms:	PRSII
Note:	Seq homology of immunogen across species: Mouse (97%), Rat (97%), Xenopus laevis (96%), Bovine (97%), Xenopus tropicalis (97%)
Protein Families:	Druggable Genome
Protein Pathways:	Metabolic pathways, Pentose phosphate pathway, Purine metabolism



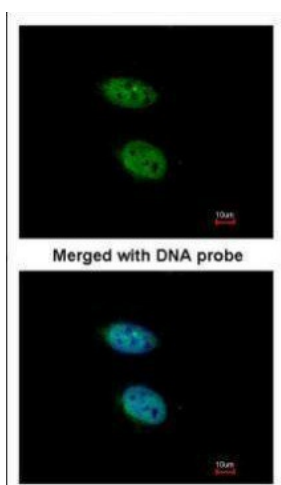
[View online »](#)

Product images:

Sample (30 ug of whole cell lysate). A: Hep G2.
10% SDS PAGE. PRPS2 antibody. TA308129
diluted at 1:1000.



Immunohistochemical analysis of paraffin-
embedded Hep3B xenograft, using PRPS2
(TA308129) antibody at 1:100 dilution.



Immunofluorescence analysis of paraformaldehyde-fixed HeLa, using PRPS2 (TA308129) antibody at 1:200 dilution.