

Product datasheet for **TA308127**

PGM3 Rabbit Polyclonal Antibody

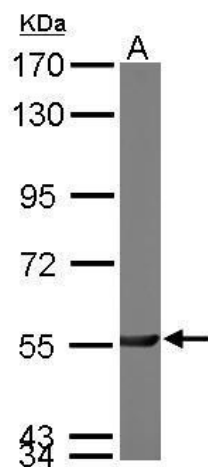
Product data:

Product Type:	Primary Antibodies
Applications:	IF, WB
Recommended Dilution:	ICC/IF:1:100-1:1000; WB:1:500-1:3000
Reactivity:	Human, Mouse (Predicted: Rat, Bovine)
Host:	Rabbit
Isotype:	IgG
Clonality:	Polyclonal
Immunogen:	Recombinant fragment corresponding to a region within amino acids 44 and 321 of PGM3 (Uniprot ID#O95394)
Formulation:	0.1M Tris, 0.1M Glycine, 20% Glycerol (pH7). 0.01% Thimerosal was added as a preservative.
Concentration:	lot specific
Purification:	Purified by antigen-affinity chromatography.
Conjugation:	Unconjugated
Storage:	Store at -20°C as received.
Stability:	Stable for 12 months from date of receipt.
Predicted Protein Size:	60 kDa
Gene Name:	phosphoglucomutase 3
Database Link:	NP_056414 Entrez Gene 109785 MouseEntrez Gene 363109 RatEntrez Gene 5238 Human O95394
Synonyms:	AGM1; IMD23; PAGM; PGM 3
Note:	Seq homology of immunogen across species: Rat (81%), Bovine (85%)
Protein Pathways:	Amino sugar and nucleotide sugar metabolism

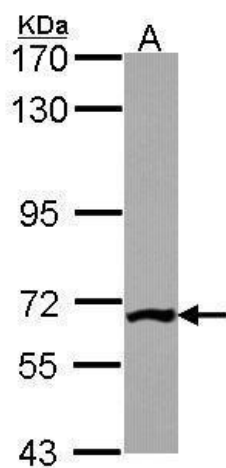


[View online »](#)

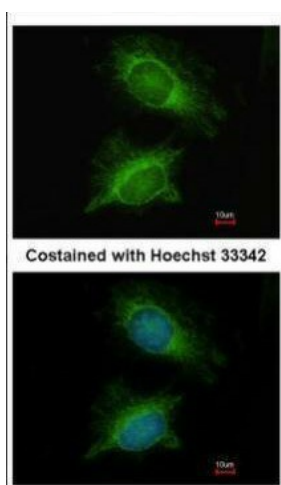
Product images:



Sample (50 ug of whole cell lysate). A: mouse brain. 7.5% SDS PAGE. TA308127 diluted at 1:3000.



Sample (30 ug of whole cell lysate). A: JurKat. 7.5% SDS PAGE. TA308127 diluted at 1:1000.



Immunofluorescence analysis of methanol-fixed HeLa, using PGM3 (TA308127) antibody at 1:200 dilution.