

Product datasheet for **TA308123**

HEAB (CLP1) Rabbit Polyclonal Antibody

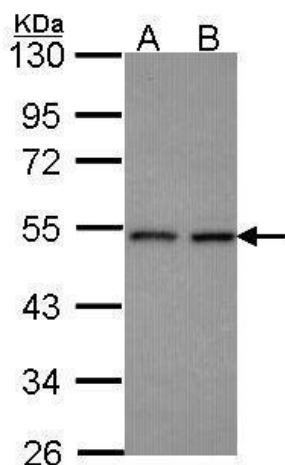
Product data:

Product Type:	Primary Antibodies
Applications:	IF, IHC, WB
Recommended Dilution:	ICC/IF:1:100-1:1000; IHC:1:100-1:1000; WB:1:500-1:3000
Reactivity:	Human (Predicted: Bovine)
Host:	Rabbit
Isotype:	IgG
Clonality:	Polyclonal
Immunogen:	Recombinant fragment corresponding to a region within amino acids 142 and 371 of CLP1 (Uniprot ID#Q92989)
Formulation:	0.1M Tris, 0.1M Glycine, 20% Glycerol (pH7). 0.01% Thimerosal was added as a preservative.
Concentration:	lot specific
Purification:	Purified by antigen-affinity chromatography.
Conjugation:	Unconjugated
Storage:	Store at -20°C as received.
Stability:	Stable for 12 months from date of receipt.
Predicted Protein Size:	48 kDa
Gene Name:	cleavage and polyadenylation factor I subunit 1
Database Link:	NP_001136069 Entrez Gene 10978 Human Q92989
Synonyms:	hClp1; HEAB
Note:	Seq homology of immunogen across species: Bovine (100%)

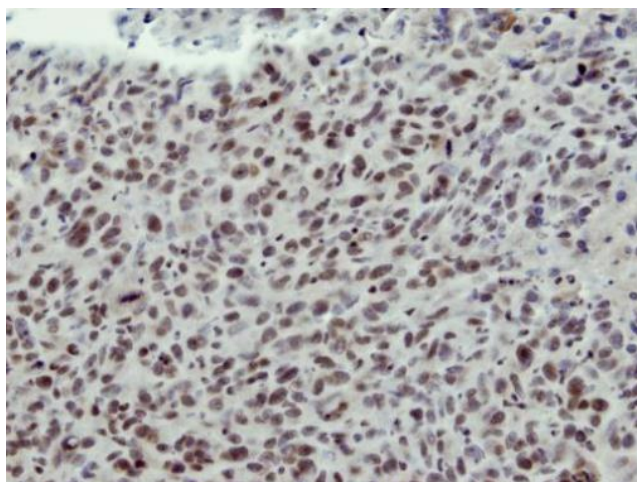


[View online »](#)

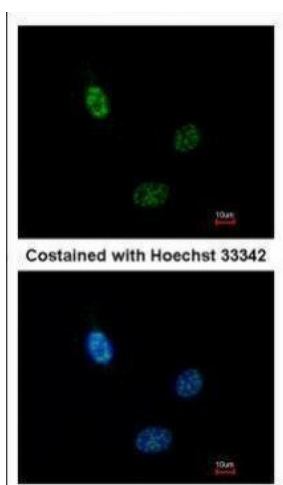
Product images:



Sample (30 ug of whole cell lysate). A: HeLa. B: Hep G2. 10% SDS PAGE. TA308123 diluted at 1:1000.



Immunohistochemical analysis of paraffin-embedded HS578T xenograft, using CLP1 (TA308123) antibody at 1:100 dilution.



Immunofluorescence analysis of paraformaldehyde-fixed HeLa, using CLP1 (TA308123) antibody at 1:200 dilution.