

Product datasheet for **TA308122**

SCMH1 Rabbit Polyclonal Antibody

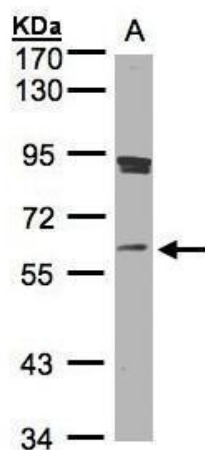
Product data:

Product Type:	Primary Antibodies
Applications:	IF, IHC, WB
Recommended Dilution:	ICC/IF:1:100-1:1000; IHC:1:100-1:1000; WB:1:500-1:3000
Reactivity:	Human (Predicted: Bovine)
Host:	Rabbit
Isotype:	IgG
Clonality:	Polyclonal
Immunogen:	Recombinant fragment corresponding to a region within amino acids 29 and 285 of SCMH1 (Uniprot ID#Q96GD3)
Formulation:	0.1M Tris, 0.1M Glycine, 10% Glycerol (pH7). 0.01% Thimerosal was added as a preservative.
Concentration:	lot specific
Purification:	Purified by antigen-affinity chromatography.
Conjugation:	Unconjugated
Storage:	Store at -20°C as received.
Stability:	Stable for 12 months from date of receipt.
Predicted Protein Size:	65 kDa
Gene Name:	sex comb on midleg homolog 1 (Drosophila)
Database Link:	NP_001026864 Entrez Gene 22955 Human Q96GD3
Synonyms:	Scml3
Note:	Seq homology of immunogen across species: Bovine (100%)
Protein Families:	Transcription Factors

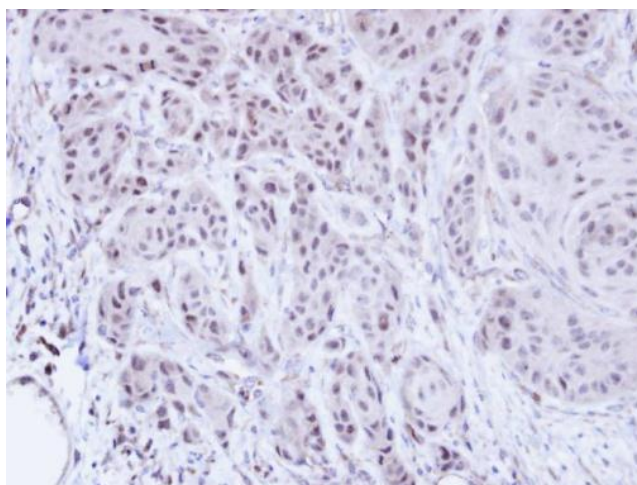


[View online »](#)

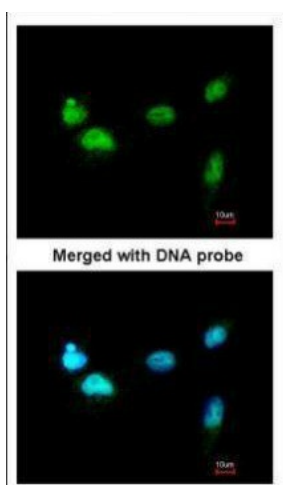
Product images:



Sample (30 ug whole cell lysate). A:Raji. 7.5% SDS PAGE. TA308122 diluted at 1:1000



Immunohistochemical analysis of paraffin-embedded Cal27 xenograft, using SCM1 (TA308122) antibody at 1:100 dilution.



Immunofluorescence analysis of paraformaldehyde-fixed A549, using SCM1 (TA308122) antibody at 1:200 dilution.