

## Product datasheet for **TA308121**

### JPT1 Rabbit Polyclonal Antibody

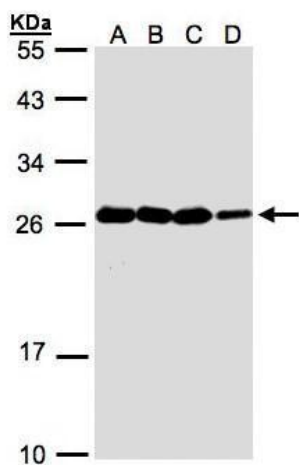
#### Product data:

Product Type:	Primary Antibodies
Applications:	WB
Recommended Dilution:	WB:1:500-1:3000
Reactivity:	Human (Predicted: Mouse, Rat, Cow, Dog, Monkey)
Host:	Rabbit
Isotype:	IgG
Clonality:	Polyclonal
Immunogen:	Recombinant fragment contain a sequence corresponding to a region within amino acids 1 and 166 of HN1 (Uniprot ID#Q9UK76 isoform2)
Formulation:	1XPBS, 20% Glycerol (pH7). 0.025% ProClin 300 was added as a preservative.
Concentration:	lot specific
Purification:	Purified by antigen-affinity chromatography.
Conjugation:	Unconjugated
Storage:	Store at -20°C as received.
Stability:	Stable for 12 months from date of receipt.
Predicted Protein Size:	20 kDa
Gene Name:	hematological and neurological expressed 1
Database Link:	<a href="#">NP_001002032</a> <a href="#">Entrez Gene 15374 Mouse</a> <a href="#">Entrez Gene 287828 Rat</a> <a href="#">Entrez Gene 450237 Dog</a> <a href="#">Entrez Gene 664729 Monkey</a> <a href="#">Entrez Gene 51155 Human</a> <a href="#">Q9UK76</a>
Synonyms:	ARM2; HN1A
Note:	Seq homology of immunogen across species: mouse (88%), Rat (82%), cow (88%), Dog (83%), Monkey (100%)



[View online »](#)

## Product images:



Sample (30 ug whole cell lysate). A:A431.  
B:H1299. C:HeLa S3. D:Hep G2. 12% SDS PAGE.  
TA308121 diluted at 1:1000