

## Product datasheet for **TA308120**

### PMM2 Rabbit Polyclonal Antibody

#### Product data:

Product Type:	Primary Antibodies
Applications:	IHC, WB
Recommended Dilution:	IHC:1:100-1:1000; WB:1:500-1:3000
Reactivity:	Human (Predicted: Mouse, Chicken, Rat, Bovine)
Host:	Rabbit
Isotype:	IgG
Clonality:	Polyclonal
Immunogen:	Recombinant fragment corresponding to a region within amino acids 1 and 214 of PMM2 (Uniprot ID#O15305)
Formulation:	0.1M Tris, 0.1M Glycine, 20% Glycerol (pH7). 0.01% Thimerosal was added as a preservative.
Concentration:	lot specific
Purification:	Purified by antigen-affinity chromatography.
Conjugation:	Unconjugated
Storage:	Store at -20°C as received.
Stability:	Stable for 12 months from date of receipt.
Predicted Protein Size:	28 kDa
Gene Name:	phosphomannomutase 2
Database Link:	<a href="#">NP_000294</a> <a href="#">Entrez Gene 54128 MouseEntrez Gene 302915 RatEntrez Gene 5373 Human O15305</a>
Background:	The protein encoded by this gene catalyzes the isomerization of mannose 6-phosphate to mannose 1-phosphate, which is a precursor to GDP-mannose necessary for the synthesis of dolichol-P-oligosaccharides. Mutations in this gene have been shown to cause defects in glycoprotein biosynthesis, which manifests as carbohydrate-deficient glycoprotein syndrome type I. [provided by RefSeq]
Synonyms:	CDG1; CDG1a; CDGS; PMI; PMI1; PMM 2



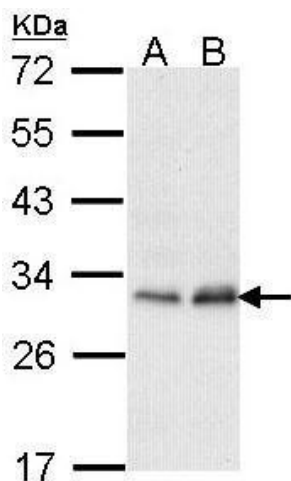
[View online »](#)

**Note:** Seq homology of immunogen across species: Mouse (93%), Chicken (86%), Rat (95%), Bovine (93%)

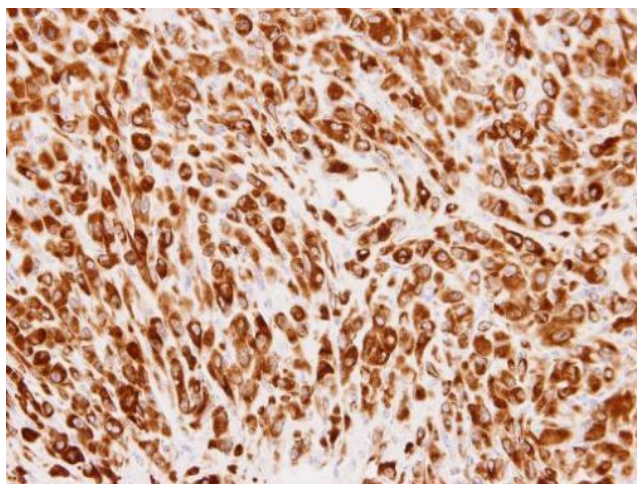
**Protein Families:** Druggable Genome

**Protein Pathways:** Amino sugar and nucleotide sugar metabolism, Fructose and mannose metabolism, Metabolic pathways

**Product images:**



Sample (30 ug of whole cell lysate). A: HeLa. B: Hep G2. 12% SDS PAGE. TA308120 diluted at 1:1000.



Immunohistochemical analysis of paraffin-embedded U87 xenograft, using PMM2 (TA308120) antibody at 1:100 dilution.