

Product datasheet for **TA308118**

LZTFL1 Rabbit Polyclonal Antibody

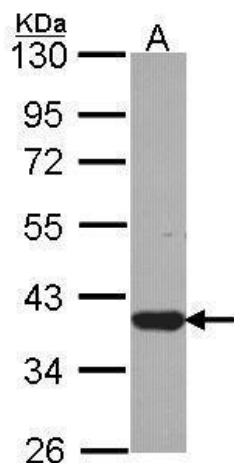
Product data:

Product Type:	Primary Antibodies
Applications:	IF, WB
Recommended Dilution:	ICC/IF:1:100-1:1000; WB:1:500-1:3000
Reactivity:	Human (Predicted: Mouse, Rat, Bovine)
Host:	Rabbit
Isotype:	IgG
Clonality:	Polyclonal
Immunogen:	Recombinant fragment corresponding to a region within amino acids 1 and 269 of LZTFL1 (Uniprot ID#Q9NQ48)
Formulation:	0.1M Tris, 0.1M Glycine, 20% Glycerol (pH7). 0.01% Thimerosal was added as a preservative.
Concentration:	lot specific
Purification:	Purified by antigen-affinity chromatography.
Conjugation:	Unconjugated
Storage:	Store at -20°C as received.
Stability:	Stable for 12 months from date of receipt.
Predicted Protein Size:	35 kDa
Gene Name:	leucine zipper transcription factor like 1
Database Link:	NP_065080 Entrez Gene 93730 Mouse Entrez Gene 316102 Rat Entrez Gene 54585 Human Q9NQ48
Synonyms:	BBS17
Note:	Seq homology of immunogen across species: Mouse (88%), Rat (90%), Bovine (90%)
Protein Families:	Transcription Factors

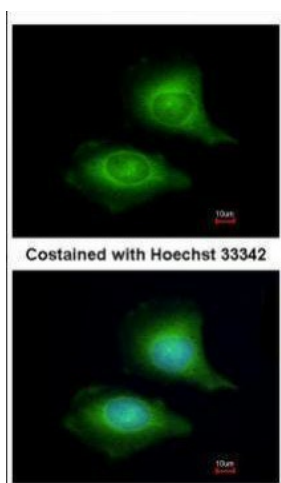


[View online »](#)

Product images:



Sample (30 ug of whole cell lysate). A: JurKat. 10% SDS PAGE. TA308118 diluted at 1:1000.



Immunofluorescence analysis of methanol-fixed HeLa, using LZTFL1 (TA308118) antibody at 1:200 dilution.