

## Product datasheet for **TA308117**

### ARHGEF14 (MCF2L) Rabbit Polyclonal Antibody

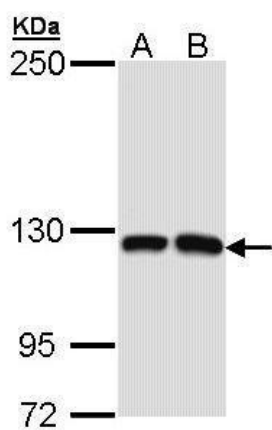
#### Product data:

Product Type:	Primary Antibodies
Applications:	WB
Recommended Dilution:	WB:1:500-1:3000
Reactivity:	Human (Predicted: Mouse, Rat)
Host:	Rabbit
Isotype:	IgG
Clonality:	Polyclonal
Immunogen:	Recombinant fragment corresponding to a region within amino acids 84 and 367 of Dbs (Uniprot ID#O15068)
Formulation:	0.1M Tris, 0.1M Glycine, 10% Glycerol (pH7). 0.01% Thimerosal was added as a preservative.
Concentration:	lot specific
Purification:	Purified by antigen-affinity chromatography.
Conjugation:	Unconjugated
Storage:	Store at -20°C as received.
Stability:	Stable for 12 months from date of receipt.
Predicted Protein Size:	131 kDa
Gene Name:	MCF.2 cell line derived transforming sequence like
Database Link:	<a href="#">NP_001106203</a> <a href="#">Entrez Gene 17207 Mouse</a> <a href="#">Entrez Gene 117020 Rat</a> <a href="#">Entrez Gene 23263 Human</a> <a href="#">O15068</a>
Synonyms:	ARHGEF14; DBS; OST
Note:	Seq homology of immunogen across species: Mouse (90%), Rat (95%)



[View online »](#)

## Product images:



Sample (30 ug of whole cell lysate). A: Molt-4. B: Raji. 5% SDS PAGE. TA308117 diluted at 1:1000.