

## Product datasheet for **TA308115**

### **BAIAP2L1 Rabbit Polyclonal Antibody**

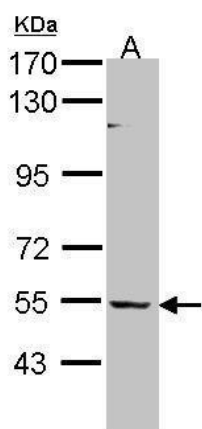
#### **Product data:**

<b>Product Type:</b>	Primary Antibodies
<b>Applications:</b>	IF, WB
<b>Recommended Dilution:</b>	ICC/IF:1:100-1:1000; WB:1:500-1:3000
<b>Reactivity:</b>	Human (Predicted: Mouse, Rat)
<b>Host:</b>	Rabbit
<b>Isotype:</b>	IgG
<b>Clonality:</b>	Polyclonal
<b>Immunogen:</b>	Recombinant fragment corresponding to a region within amino acids 1 and 266 of BAIAP2L1 (Uniprot ID#Q9UHR4)
<b>Formulation:</b>	0.1M Tris, 0.1M Glycine, 10% Glycerol (pH7). 0.01% Thimerosal was added as a preservative.
<b>Concentration:</b>	lot specific
<b>Purification:</b>	Purified by antigen-affinity chromatography.
<b>Conjugation:</b>	Unconjugated
<b>Storage:</b>	Store at -20°C as received.
<b>Stability:</b>	Stable for 12 months from date of receipt.
<b>Predicted Protein Size:</b>	57 kDa
<b>Gene Name:</b>	BAI1 associated protein 2 like 1
<b>Database Link:</b>	<a href="#">NP_061330</a> <a href="#">Entrez Gene 66898 Mouse</a> <a href="#">Entrez Gene 304282 Rat</a> <a href="#">Entrez Gene 55971 Human</a> <a href="#">Q9UHR4</a>
<b>Synonyms:</b>	IRTKS
<b>Note:</b>	Seq homology of immunogen across species: Mouse (94%), Rat (94%)
<b>Protein Families:</b>	Druggable Genome

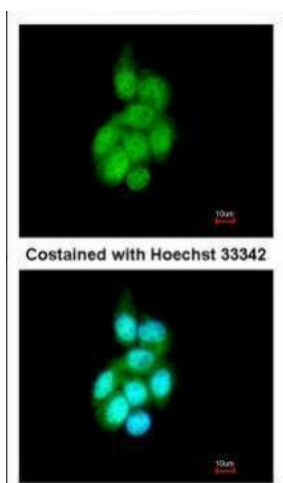


[View online »](#)

## Product images:



Sample (30 ug of whole cell lysate). A: HeLa. 7.5% SDS PAGE. TA308115 diluted at 1:1000.



Immunofluorescence analysis of methanol-fixed A431, using BAIAP2L1 (TA308115) antibody at 1:200 dilution.