

Product datasheet for **TA308111**

IL17RD Rabbit Polyclonal Antibody

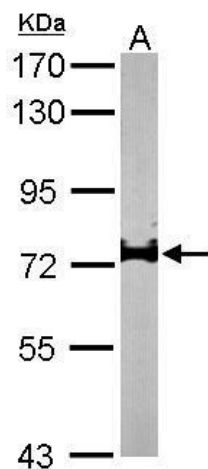
Product data:

Product Type:	Primary Antibodies
Applications:	WB
Recommended Dilution:	WB:1:500-1:3000
Reactivity:	Human, Mouse (Predicted: Bovine)
Host:	Rabbit
Isotype:	IgG
Clonality:	Polyclonal
Immunogen:	Recombinant fragment corresponding to a region within amino acids 286 and 531 of IL17 receptor D (Uniprot ID#Q8NFM7)
Formulation:	0.1M Tris, 0.1M Glycine, 10% Glycerol (pH7). 0.01% Thimerosal was added as a preservative.
Concentration:	lot specific
Purification:	Purified by antigen-affinity chromatography.
Conjugation:	Unconjugated
Storage:	Store at -20°C as received.
Stability:	Stable for 12 months from date of receipt.
Predicted Protein Size:	82 kDa
Database Link:	Entrez Gene 171463 Mouse
Background:	Fibroblast growth factors (FGFs; see MIM 603726) are secreted proteins involved in cellular proliferation, migration, differentiation, and survival. FGF activity is negatively regulated by members of the 'sprouty' family (e.g., SPRY1, MIM 602465). The SEF protein is a modulator of FGF signaling. [supplied by OMIM]
Synonyms:	DKFZp434N1928; FLJ35755; IL-17RD; IL17RLM; interleukin 17 receptor D; MGC133309; SEF
Note:	Seq homology of immunogen across species: Bovine (95%)
Protein Families:	Druggable Genome

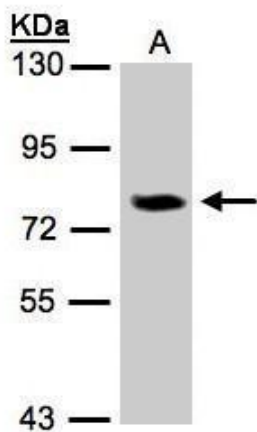


[View online »](#)

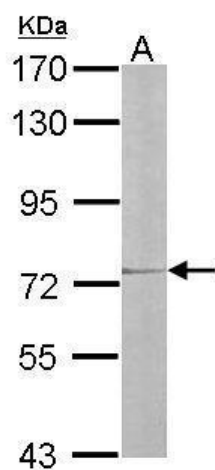
Product images:



Sample (50 ug of whole cell lysate). A: Mouse brain. 7.5% SDS PAGE. TA308111 diluted at 1:1000.



Sample (30 ug of whole cell lysate). A:293T. 7.5% SDS PAGE. TA308111 diluted at 1:500



Sample (30 ug of whole cell lysate). A:NIH-3T3.
7.5% SDS PAGE. TA308111 diluted at 1:2000.