

Product datasheet for **TA308109**

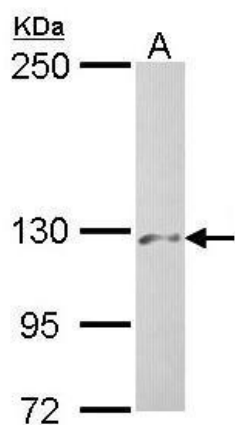
PHKA2 Rabbit Polyclonal Antibody

Product data:

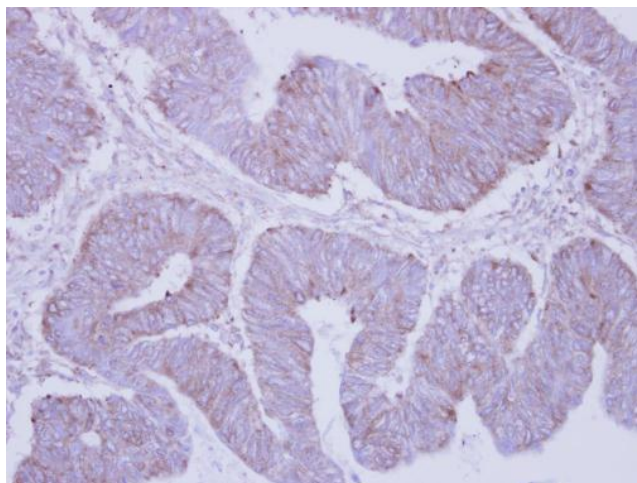
Product Type:	Primary Antibodies
Applications:	IHC, WB
Recommended Dilution:	IHC:1:100-1:1000; WB:1:500-1:3000
Reactivity:	Human (Predicted: Mouse, Bovine)
Host:	Rabbit
Isotype:	IgG
Clonality:	Polyclonal
Immunogen:	Synthetic peptide corresponding to a region within amino acids 1172 and 1235 of PHKA2 (Uniprot ID#P46019)
Formulation:	0.1M Tris, 0.1M Glycine, 10% Glycerol (pH7). 0.01% Thimerosal was added as a preservative.
Concentration:	lot specific
Purification:	Purified by antigen-affinity chromatography.
Conjugation:	Unconjugated
Storage:	Store at -20°C as received.
Stability:	Stable for 12 months from date of receipt.
Predicted Protein Size:	138 kDa
Gene Name:	phosphorylase kinase regulatory subunit alpha 2
Database Link:	NP_000283 Entrez Gene 110094 Mouse Entrez Gene 5256 Human P46019
Synonyms:	GSD9A; PHK; PYK; PYKL; XLG; XLG2
Note:	Seq homology of immunogen across species: Mouse (86%), Bovine (93%)
Protein Families:	Druggable Genome
Protein Pathways:	Calcium signaling pathway, Insulin signaling pathway



[View online »](#)

Product images:

Sample (30 ug of whole cell lysate). A: Hep G2. 5% SDS PAGE. TA308109 diluted at 1:500.



Immunohistochemical analysis of paraffin-embedded Colon ca, using PHKA2 (TA308109) antibody at 1:250 dilution.