

Product datasheet for **TA308107**

GLYCTK Rabbit Polyclonal Antibody

Product data:

Product Type:	Primary Antibodies
Applications:	WB
Recommended Dilution:	WB:1:500-1:3000
Reactivity:	Human, Mouse (Predicted: Rat, Bovine)
Host:	Rabbit
Isotype:	IgG
Clonality:	Polyclonal
Immunogen:	Recombinant fragment corresponding to a region within amino acids 144 and 523 of GLYCTK (Uniprot ID#Q8IVS8)
Formulation:	0.1M Tris, 0.1M Glycine, 10% Glycerol (pH7). 0.01% Thimerosal was added as a preservative.
Concentration:	lot specific
Purification:	Purified by antigen-affinity chromatography.
Conjugation:	Unconjugated
Storage:	Store at -20°C as received.
Stability:	Stable for 12 months from date of receipt.
Predicted Protein Size:	55 kDa
Gene Name:	glycerate kinase
Database Link:	NP_001138423 Entrez Gene 235582 MouseEntrez Gene 684314 RatEntrez Gene 132158 Human Q8IVS8
Background:	This locus encodes a member of the glycerate kinase type-2 family. The encoded enzyme catalyzes the phosphorylation of (R)-glycerate and may be involved in serine degradation and fructose metabolism. Decreased activity of the encoded enzyme may be associated with the disease D-glyceric aciduria. Alternatively spliced transcript variants have been described. [provided by RefSeq]
Synonyms:	HBeAgBP4A; HBEBP2; HBEBP4
Note:	Seq homology of immunogen across species: Rat (83%), Bovine (85%)

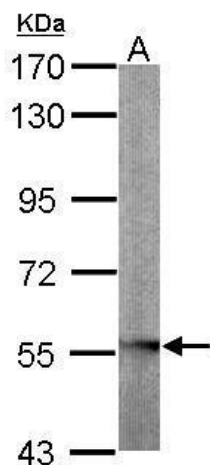


[View online »](#)

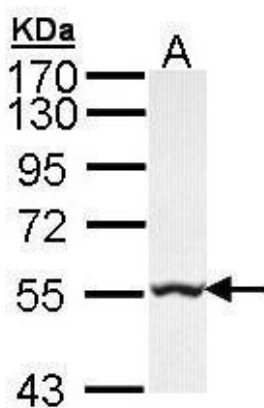
Protein Families: Transcription Factors

Protein Pathways: Glycerolipid metabolism, Glycine, serine and threonine metabolism, Glyoxylate and dicarboxylate metabolism, Metabolic pathways

Product images:



Sample (50 ug of whole cell lysate). A: mouse liver. 7.5% SDS PAGE. TA308107 diluted at 1:1000.



Sample (30 ug of whole cell lysate). A: Hep G2. 7.5% SDS PAGE. TA308107 diluted at 1:1000.