

Product datasheet for **TA308106**

TXNDC3 (NME8) Rabbit Polyclonal Antibody

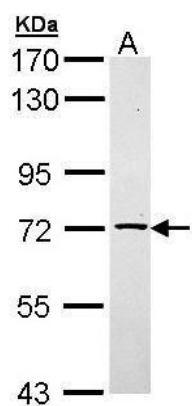
Product data:

| | |
|-------------------------|---|
| Product Type: | Primary Antibodies |
| Applications: | IHC, WB |
| Recommended Dilution: | IHC:1:100-1:1000; WB:1:500-1:3000 |
| Reactivity: | Human |
| Host: | Rabbit |
| Isotype: | IgG |
| Clonality: | Polyclonal |
| Immunogen: | Recombinant fragment corresponding to a region within amino acids 270 and 550 of TXNDC3 (Uniprot ID#Q8N427) |
| Formulation: | 0.1M Tris, 0.1M Glycine, 10% Glycerol (pH7). 0.01% Thimerosal was added as a preservative. |
| Concentration: | lot specific |
| Purification: | Purified by antigen-affinity chromatography. |
| Conjugation: | Unconjugated |
| Storage: | Store at -20°C as received. |
| Stability: | Stable for 12 months from date of receipt. |
| Predicted Protein Size: | 67 kDa |
| Gene Name: | NME/NM23 family member 8 |
| Database Link: | NP_057700 Entrez Gene 51314 Human Q8N427 |
| Background: | TXNDC3 encodes a group II thioredoxin protein, composed of a thioredoxin domain and 3 NDP kinase domains, with testis-specific expression. [supplied by OMIM] |
| Synonyms: | CILD6; HEL-S-99; NM23-H8; sptrx-2; SPTRX2; TXNDC3 |
| Protein Families: | Druggable Genome |

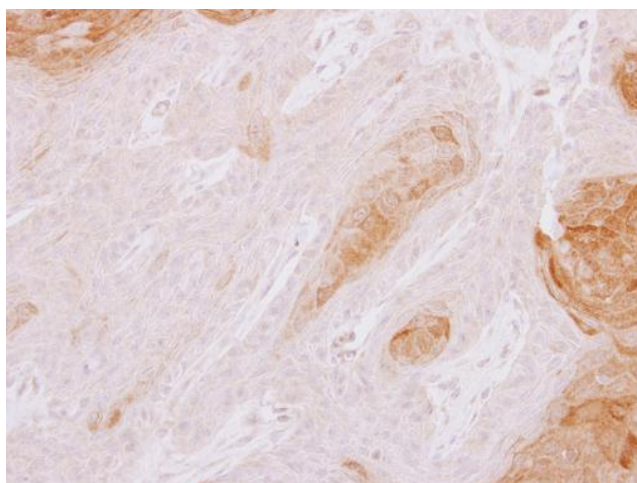


[View online »](#)

Product images:



Sample (30 ug of whole cell lysate). A: Raji. 7.5% SDS PAGE. TA308106 diluted at 1:1000.



TXNDC3 antibody [N3C3] detects TXNDC3 protein at cytoplasm on Cal27 xenograft by immunohistochemical analysis. Sample: Paraffin-embedded Cal27 xenograft. TXNDC3 antibody [N3C3] (TA308106) dilution: 1:500.