

Product datasheet for **TA308103**

MTMR9 Rabbit Polyclonal Antibody

Product data:

Product Type:	Primary Antibodies
Applications:	IF, IHC, WB
Recommended Dilution:	ICC/IF:1:100-1:1000; IHC:1:100-1:1000; WB:1:500-1:3000
Reactivity:	Human (Predicted: Rat, Bovine)
Host:	Rabbit
Isotype:	IgG
Clonality:	Polyclonal
Immunogen:	Synthetic peptide corresponding to a region within amino acids 487 and 549 of MTMR9 (Uniprot ID#Q96QG7)
Formulation:	0.1M Tris, 0.1M Glycine, 10% Glycerol (pH7). 0.01% Thimerosal was added as a preservative.
Concentration:	lot specific
Purification:	Purified by antigen-affinity chromatography.
Conjugation:	Unconjugated
Storage:	Store at -20°C as received.
Stability:	Stable for 12 months from date of receipt.
Predicted Protein Size:	63 kDa
Gene Name:	myotubularin related protein 9
Database Link:	NP_056273 Entrez Gene 282584 RatEntrez Gene 66036 Human Q96QG7
Background:	This gene encodes a myotubularin-related protein that is atypical to most other members of the myotubularin-related protein family because it has no dual-specificity phosphatase domain. The encoded protein contains a double-helical motif similar to the SET interaction domain, which is thought to have a role in the control of cell proliferation. In mouse, a protein similar to the encoded protein binds with MTMR7, and together they dephosphorylate phosphatidylinositol 3-phosphate and inositol 1,3-bisphosphate. [provided by RefSeq]
Synonyms:	C8orf9; LIP-STYX; MTMR8

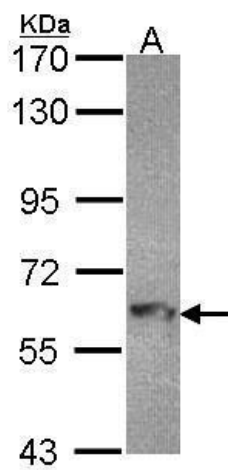


[View online »](#)

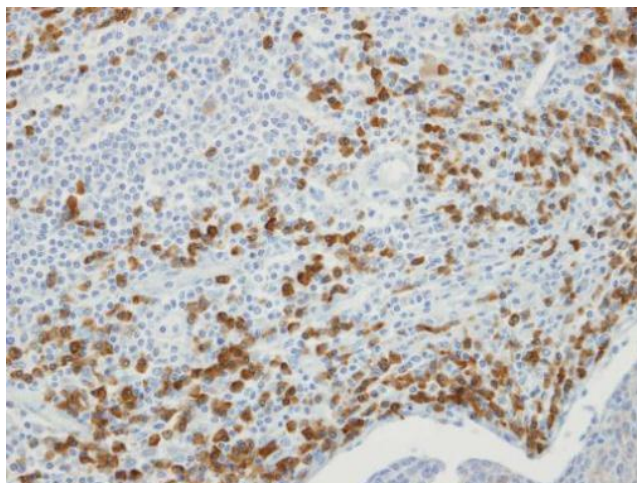
Note: Seq homology of immunogen across species: Rat (85%), Bovine (92%)

Protein Families: Druggable Genome, Phosphatase

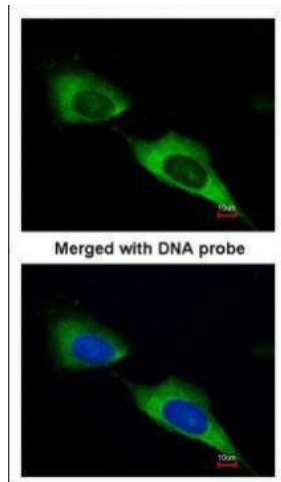
Product images:



Sample (30 ug of whole cell lysate). A: Hep G2. 7.5% SDS PAGE. MTMR9 antibody. TA308103 diluted at 1:1000.



Immunohistochemical analysis of paraffin-embedded SCC xenograft, using MTMR9 (TA308103) antibody at 1:100 dilution.



Immunofluorescence analysis of paraformaldehyde-fixed HeLa, using MTMR9 (TA308103) antibody at 1:200 dilution.