

Product datasheet for **TA308101**

EVC2 Rabbit Polyclonal Antibody

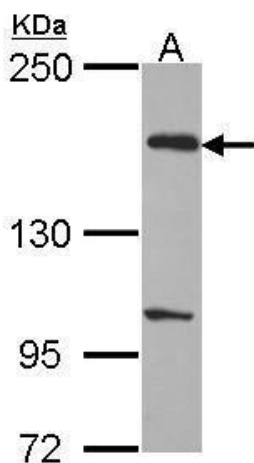
Product data:

Product Type:	Primary Antibodies
Applications:	IF, WB
Recommended Dilution:	ICC/IF:1:100-1:1000; WB:1:500-1:3000
Reactivity:	Human (Predicted: Mouse)
Host:	Rabbit
Isotype:	IgG
Clonality:	Polyclonal
Immunogen:	Synthetic peptide corresponding to a region within amino acids 1246 and 1308 of EVC2 (Uniprot ID#Q86UK5)
Formulation:	0.1M Tris, 0.1M Glycine, 10% Glycerol (pH7). 0.01% Thimerosal was added as a preservative.
Concentration:	lot specific
Purification:	Purified by antigen-affinity chromatography.
Conjugation:	Unconjugated
Storage:	Store at -20°C as received.
Stability:	Stable for 12 months from date of receipt.
Predicted Protein Size:	148 kDa
Gene Name:	EvC ciliary complex subunit 2
Database Link:	NP_667338 Entrez Gene 68525 Mouse Entrez Gene 132884 Human Q86UK5
Synonyms:	LBN; WAD
Note:	Seq homology of immunogen across species: Mouse (85%)
Protein Families:	Transmembrane

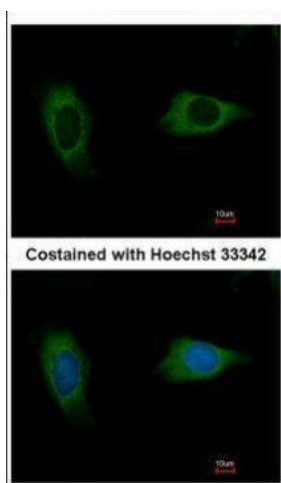


[View online »](#)

Product images:



Sample (30 ug of whole cell lysate). A: H1299. 5% SDS PAGE. EVC2 antibody. TA308101 diluted at 1:1000.



Immunofluorescence analysis of methanol-fixed HeLa, using EVC2 (TA308101) antibody at 1:500 dilution.