

Product datasheet for **TA308100**

HUS1 Rabbit Polyclonal Antibody

Product data:

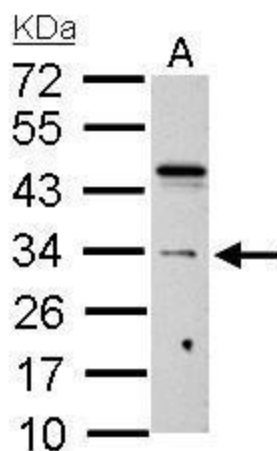
Product Type:	Primary Antibodies
Applications:	IHC, WB
Recommended Dilution:	IHC:1:100-1:1000; WB:1:500-1:3000
Reactivity:	Human
Host:	Rabbit
Isotype:	IgG
Clonality:	Polyclonal
Immunogen:	Recombinant fragment corresponding to a region within amino acids 1 and 273 of HUS1 (Uniprot ID#O60921)
Formulation:	0.1M Tris, 0.1M Glycine, 20% Glycerol (pH7). 0.01% Thimerosal was added as a preservative.
Purification:	Purified by antigen-affinity chromatography.
Conjugation:	Unconjugated
Storage:	Store at -20°C as received.
Stability:	Stable for 12 months from date of receipt.
Predicted Protein Size:	32 kDa
Gene Name:	HUS1 checkpoint clamp component
Database Link:	NP_004498 Entrez Gene 3364 Human O60921
Background:	The protein encoded by this gene is a component of an evolutionarily conserved, genotoxin-activated checkpoint complex that is involved in the cell cycle arrest in response to DNA damage. This protein forms a heterotrimeric complex with checkpoint proteins RAD9 and RAD1. In response to DNA damage, the trimeric complex interacts with another protein complex consisting of checkpoint protein RAD17 and four small subunits of the replication factor C (RFC), which loads the combined complex onto the chromatin. The DNA damage induced chromatin binding has been shown to depend on the activation of the checkpoint kinase ATM, and is thought to be an early checkpoint signaling event. [provided by RefSeq]
Synonyms:	hHUS1



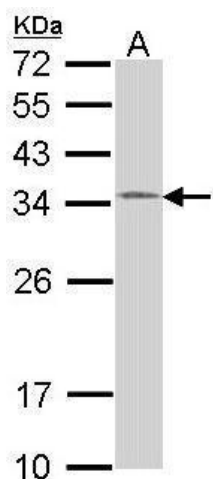
[View online »](#)

Protein Families: Druggable Genome

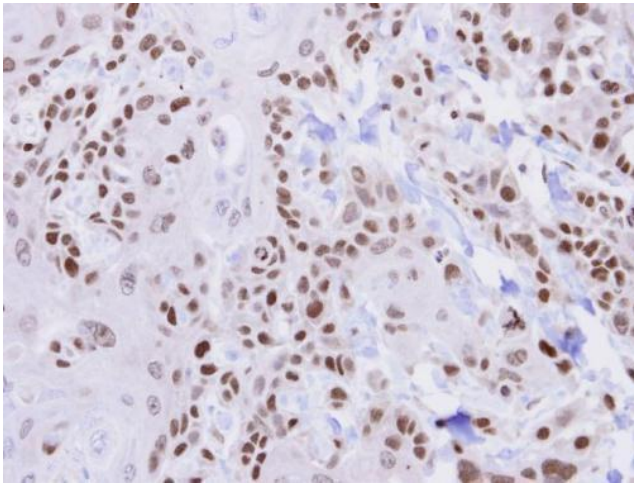
Product images:



HUS1 antibody detects HUS1 protein by Western blot analysis. A. 30 ug C8D30 whole cell lysate/extract. 12 % SDS-PAGE. HUS1 antibody (TA308100) dilution: 1:1000



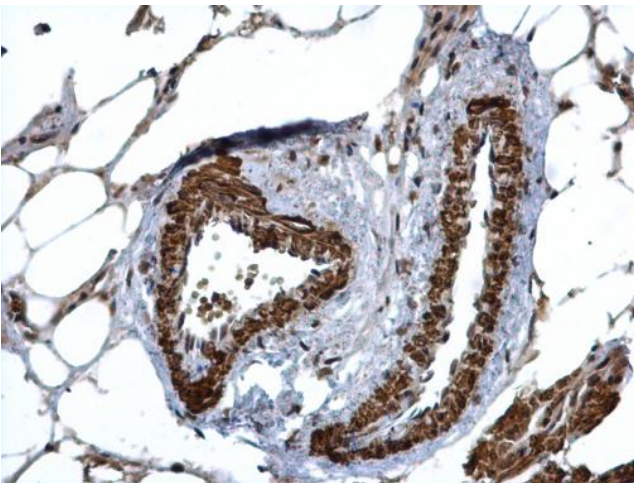
Sample (30 ug of whole cell lysate). A: 293T. 12% SDS PAGE. TA308100 diluted at 1:1000.



Immunohistochemical analysis of paraffin-embedded CA922 xenograft, using HUS1 (TA308100) antibody at 1:500 dilution.



HUS1 antibody detects HUS1 protein at cytosol and nucleus on rat fore brain by immunohistochemical analysis. Sample: Paraffin-embedded rat fore brain. HUS1 antibody (TA308100) dilution: 1:500.



HUS1 antibody detects HUS1 protein at cytosol and nucleus on mouse lymph node by immunohistochemical analysis. Sample: Paraffin-embedded mouse lymph node. HUS1 antibody (TA308100) dilution: 1:500.