

Product datasheet for **TA308099**

CDC26 Rabbit Polyclonal Antibody

Product data:

Product Type:	Primary Antibodies
Applications:	IF, WB
Recommended Dilution:	ICC/IF:1:100-1:1000; WB:1:500-1:3000
Reactivity:	Human (Predicted: Mouse, Monkey, Rat, Bovine)
Host:	Rabbit
Isotype:	IgG
Clonality:	Polyclonal
Immunogen:	Recombinant fragment corresponding to a region within amino acids 1 and 85 of CDC26 (Uniprot ID#Q8NHZ8)
Formulation:	0.1M Tris, 0.1M Glycine, 10% Glycerol (pH7). 0.01% Thimerosal was added as a preservative.
Concentration:	lot specific
Purification:	Purified by antigen-affinity chromatography.
Conjugation:	Unconjugated
Storage:	Store at -20°C as received.
Stability:	Stable for 12 months from date of receipt.
Predicted Protein Size:	10 kDa
Gene Name:	cell division cycle 26
Database Link:	NP_644815 Entrez Gene 66440 Mouse Entrez Gene 366381 Rat Entrez Gene 706165 Monkey Entrez Gene 246184 Human Q8NHZ8
Background:	The protein encoded by this gene is highly similar to <i>Saccharomyces cerevisiae</i> Cdc26, a component of cell cycle anaphase-promoting complex (APC). APC is composed of a group of highly conserved proteins and functions as a cell cycle-regulated ubiquitin-protein ligase. APC thus is responsible for the cell cycle regulated proteolysis of various proteins. [provided by RefSeq]
Synonyms:	ANAPC12; APC12; C9orf17

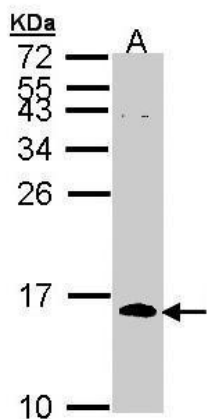


[View online »](#)

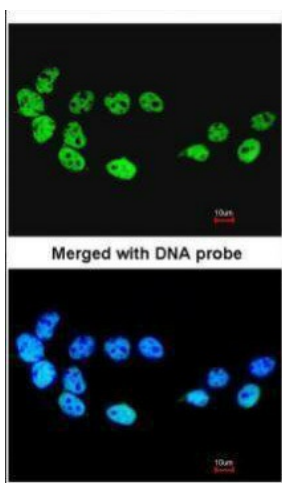
Note: Seq homology of immunogen across species: Mouse (88%), Monkey (98%), Rat (89%), Bovine (94%)

Protein Pathways: Cell cycle, Oocyte meiosis, Progesterone-mediated oocyte maturation, Ubiquitin mediated proteolysis

Product images:



Sample (30 ug of whole cell lysate). A: H1299. 15% SDS PAGE. TA308099 diluted at 1:1000.



Immunofluorescence analysis of paraformaldehyde-fixed A431, using CDC26 (TA308099) antibody at 1:200 dilution.