

Product datasheet for **TA308098**

RAB3C Rabbit Polyclonal Antibody

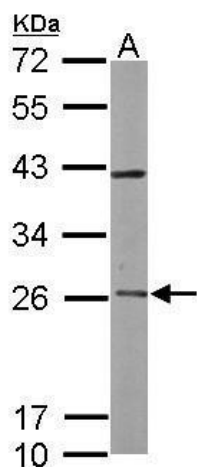
Product data:

Product Type:	Primary Antibodies
Applications:	IHC, WB
Recommended Dilution:	IHC:1:100-1:1000; WB:1:1000-1:10000
Reactivity:	Human, Mouse (Predicted: Bovine, Rhesus Monkey)
Host:	Rabbit
Isotype:	IgG
Clonality:	Polyclonal
Immunogen:	Recombinant fragment corresponding to a region within amino acids 1 and 227 of RAB3C (Uniprot ID#Q96E17)
Formulation:	0.1M Tris, 0.1M Glycine, 10% Glycerol (pH7). 0.01% Thimerosal was added as a preservative.
Concentration:	lot specific
Purification:	Purified by antigen-affinity chromatography.
Conjugation:	Unconjugated
Storage:	Store at -20°C as received.
Stability:	Stable for 12 months from date of receipt.
Predicted Protein Size:	26 kDa
Gene Name:	RAB3C, member RAS oncogene family
Database Link:	NP_612462 Entrez Gene 67295 Mouse Entrez Gene 115827 Human Q96E17
Background:	RAB proteins, such as RAB3C, are small GTPases implicated in the regulation of vesicular trafficking between membrane compartments (Cheng et al., 2002 [PubMed 12296628]). [supplied by OMIM]
Synonyms:	2700062I01Rik; 3110015B08Rik; 3110037E15Rik; A1850886; member RAS oncogene family; MGC124069; RAB3C; small GTP-binding protein Rab3C
Note:	Seq homology of immunogen across species: Rhesus Monkey (100%), Bovine (100%)
Protein Families:	Druggable Genome

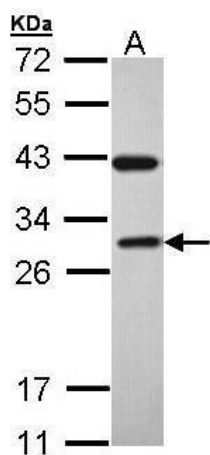


[View online »](#)

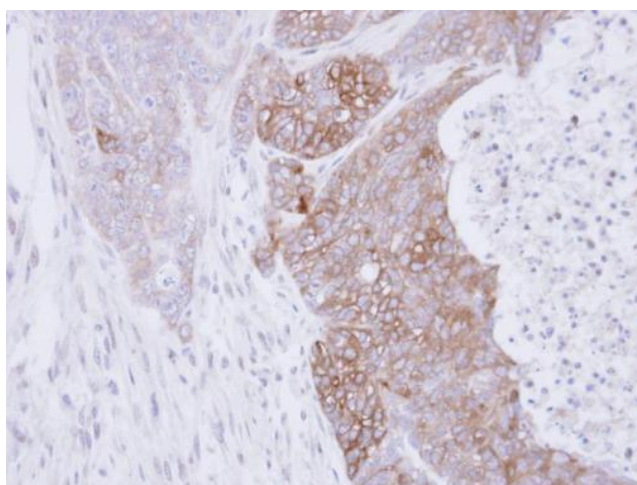
Product images:



Sample (50 ug of whole cell lysate). A: mouse brain. 12% SDS PAGE. TA308098 diluted at 1:5000.



Sample (30 ug of whole cell lysate). A: H1299. 12% SDS PAGE. TA308098 diluted at 1:1000



Immunohistochemical analysis of paraffin-embedded DLD1 xenograft, using RAB3C (TA308098) antibody at 1:500 dilution.