

## Product datasheet for **TA308097**

### Esa1 (FLOT2) Rabbit Polyclonal Antibody

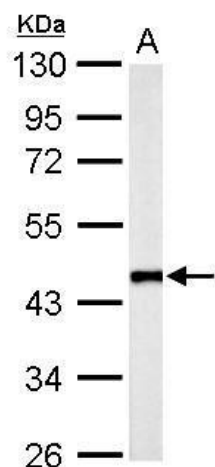
#### Product data:

Product Type:	Primary Antibodies
Applications:	IF, IHC, WB
Recommended Dilution:	ICC/IF:1:100-1:1000; IHC:1:100-1:1000; WB:1:500-1:3000
Reactivity:	Human (Predicted: Bovine)
Host:	Rabbit
Isotype:	IgG
Clonality:	Polyclonal
Immunogen:	Synthetic peptide corresponding to a region within amino acids 365 and 428 of Flotillin 2 (Uniprot ID#Q14254)
Formulation:	1XPBS, 20% Glycerol (pH7). 0.01% Thimerosal was added as a preservative.
Concentration:	lot specific
Purification:	Purified by antigen-affinity chromatography.
Conjugation:	Unconjugated
Storage:	Store at -20°C as received.
Stability:	Stable for 12 months from date of receipt.
Predicted Protein Size:	47 kDa
Gene Name:	flotillin 2
Database Link:	<a href="#">NP_004466</a> <a href="#">Entrez Gene 2319 Human Q14254</a>
Background:	Caveolae are small domains on the inner cell membrane involved in vesicular trafficking and signal transduction. This gene encodes a caveolae-associated, integral membrane protein, which is thought to function in neuronal signaling. [provided by RefSeq]
Synonyms:	ECS-1; ECS1; ESA; ESA1; M17S1
Note:	Seq homology of immunogen across species: Bovine (93%)
Protein Families:	Druggable Genome
Protein Pathways:	Insulin signaling pathway

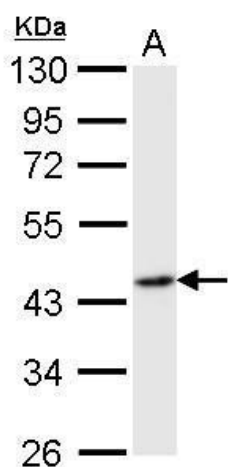


[View online »](#)

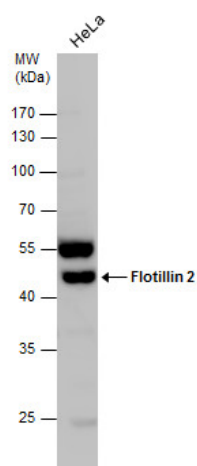
## Product images:



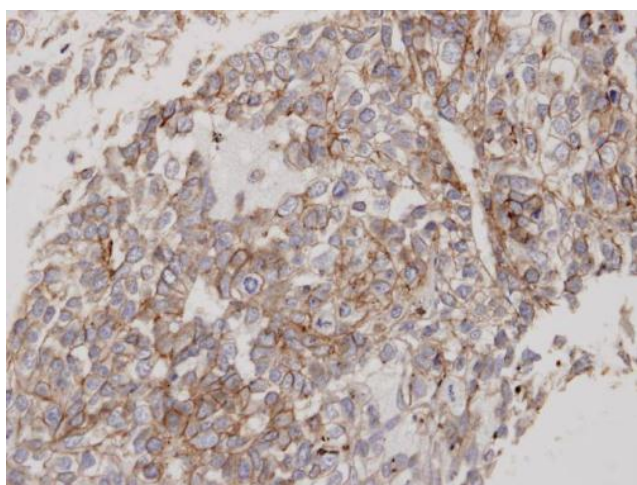
Flotillin 2 antibody [C3], C-term detects FLOT2 protein by Western blot analysis. A. 50 ug mouse brain lysate/extract. 10 % SDS-PAGE. Flotillin 2 antibody [C3], C-term (TA308097) dilution: 1:1000



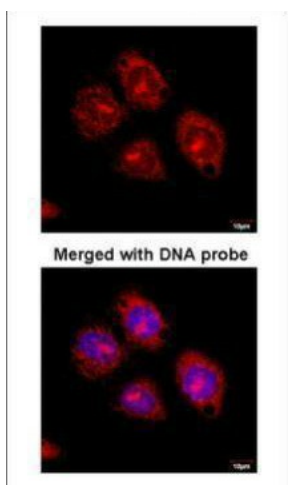
Flotillin 2 antibody [C3], C-term detects FLOT2 protein by Western blot analysis. A. 50 ug rat brain lysate/extract. 10 % SDS-PAGE. Flotillin 2 antibody [C3], C-term (TA308097) dilution: 1:1000



Flotillin 2 antibody detects Flotillin 2 protein by western blot analysis. Whole cell extracts (30 ug) was separated by 10 % SDS-PAGE, and blotted with Flotillin 2 antibody (TA308097) diluted by 1:1000



Immunohistochemical analysis of paraffin-embedded Lung CA, using Flotillin-2 (TA308097) antibody at 1:100 dilution.



Immunofluorescence analysis of paraformaldehyde-fixed HeLaS3, using Flotillin-2 (TA308097) antibody at 1:100 dilution.