

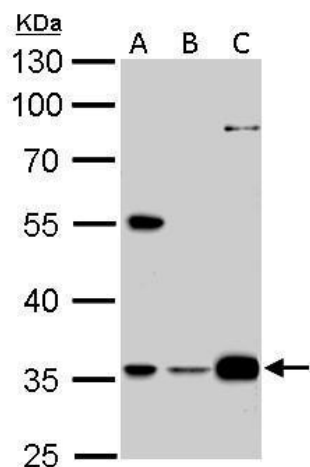
## Product datasheet for **TA308095**

### **GAS2L1 Rabbit Polyclonal Antibody**

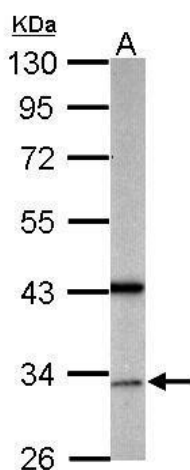
#### **Product data:**

Product Type:	Primary Antibodies
Applications:	IF, IHC, WB
Recommended Dilution:	ICC/IF:1:100-1:1000; IHC:1:100-1:1000; WB:1:500-1:3000
Reactivity:	Human, Mouse (Predicted: Rat, Bovine)
Host:	Rabbit
Isotype:	IgG
Clonality:	Polyclonal
Immunogen:	Recombinant fragment corresponding to a region within amino acids 71 and 355 of GAS2L1 (Uniprot ID#Q99501)
Formulation:	0.1M Tris, 0.1M Glycine, 10% Glycerol (pH7). 0.01% Thimerosal was added as a preservative.
Concentration:	lot specific
Purification:	Purified by antigen-affinity chromatography.
Conjugation:	Unconjugated
Storage:	Store at -20°C as received.
Stability:	Stable for 12 months from date of receipt.
Predicted Protein Size:	73 kDa
Gene Name:	growth arrest specific 2 like 1
Database Link:	<a href="#">NP_689423</a> <a href="#">Entrez Gene 78926 Mouse</a> <a href="#">Entrez Gene 360973 Rat</a> <a href="#">Entrez Gene 10634 Human</a> <a href="#">Q99501</a>
Background:	The protein encoded by this gene, a member of the GAS2 family, is similar in sequence to the mouse protein Gas2, an actin-associated protein expressed at high levels in growth-arrested cells. Expression of the mouse Gas2 gene is negatively regulated by serum and growth factors. Three transcript variants encoding two different isoforms have been found for this gene. [provided by RefSeq]
Synonyms:	GAR22
Note:	Seq homology of immunogen across species: Rat (86%), Bovine (89%)

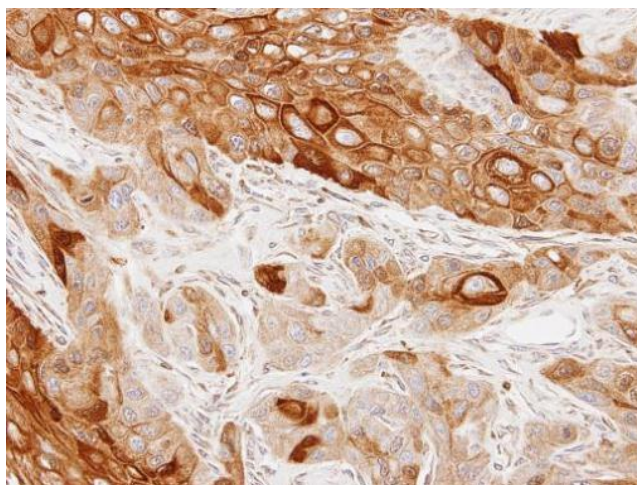

[View online »](#)

**Product images:**


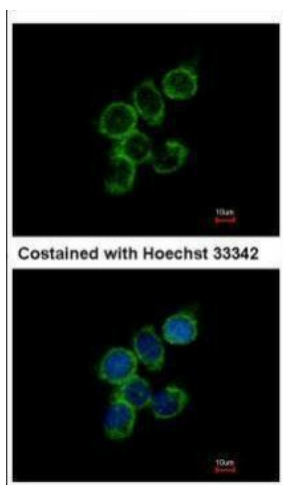
GAS2L1 antibody detects GAS2L1 protein by Western blot analysis. A. 30 ug A431 whole cell lysate/extract. B. 30 ug HeLa whole cell lysate/extract. C. 30 ug A375 whole cell lysate/extract. 10 % SDS-PAGE. GAS2L1 antibody (TA308095) dilution: 1:1000



Sample (50 ug of whole cell lysate). A: mouse brain. 10% SDS PAGE. TA308095 diluted at 1:500.



Immunohistochemical analysis of paraffin-embedded SCC4 xenograft, using GAS2L1 (TA308095) antibody at 1:100 dilution.



Immunofluorescence analysis of methanol-fixed A431, using GAS2L1 (TA308095) antibody at 1:500 dilution.