

Product datasheet for **TA308093**

STOML1 Rabbit Polyclonal Antibody

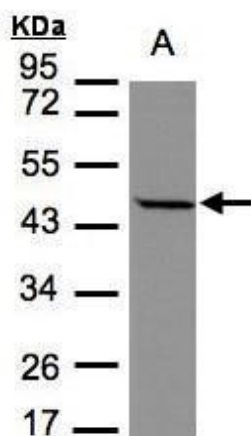
Product data:

Product Type:	Primary Antibodies
Applications:	IHC, WB
Recommended Dilution:	IHC:1:100-1:1000; WB:1:500-1:3000
Reactivity:	Human (Predicted: Bovine)
Host:	Rabbit
Isotype:	IgG
Clonality:	Polyclonal
Immunogen:	Recombinant fragment corresponding to a region within amino acids 106 and 368 of STOML1 (Uniprot ID#Q9UBI4)
Formulation:	0.1M Tris, 0.1M Glycine, 10% Glycerol (pH7). 0.01% Thimerosal was added as a preservative.
Concentration:	lot specific
Purification:	Purified by antigen-affinity chromatography.
Conjugation:	Unconjugated
Storage:	Store at -20°C as received.
Stability:	Stable for 12 months from date of receipt.
Predicted Protein Size:	43 kDa
Gene Name:	stomatin like 1
Database Link:	NP_004800 Entrez Gene 9399 Human Q9UBI4
Synonyms:	hUNC-24; SLP-1; STORP
Note:	Seq homology of immunogen across species: Bovine (89%)
Protein Families:	Transmembrane

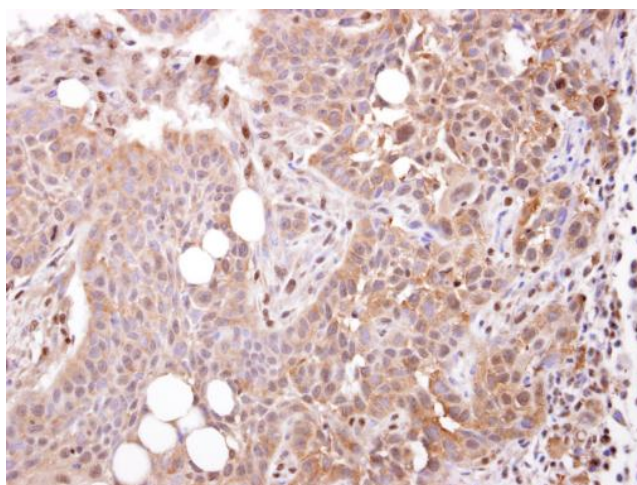


[View online »](#)

Product images:



Sample (30 ug of whole cell lysate). A: MOLT4. 7.5% SDS PAGE. TA308093 diluted at 1:1000



STOML1 antibody [N2C3] detects STOML1 protein at cytosol on HSC-3 xenograft by immunohistochemical analysis. Sample: Paraffin-embedded HSC-3 xenograft. STOML1 antibody [N2C3] (TA308093) dilution: 1:250.