

Product datasheet for **TA308090**

B3GNT3 Rabbit Polyclonal Antibody

Product data:

Product Type:	Primary Antibodies
Applications:	IHC, WB
Recommended Dilution:	IHC:1:100-1:1000; WB:1:500-1:3000
Reactivity:	Human, Mouse
Host:	Rabbit
Isotype:	IgG
Clonality:	Polyclonal
Immunogen:	Recombinant fragment corresponding to a region within amino acids 122 and 338 of B3GNT3 (Uniprot ID#Q9Y2A9)
Formulation:	0.1M Tris, 0.1M Glycine, 10% Glycerol (pH7). 0.01% Thimerosal was added as a preservative.
Concentration:	lot specific
Purification:	Purified by antigen-affinity chromatography.
Conjugation:	Unconjugated
Storage:	Store at -20°C as received.
Stability:	Stable for 12 months from date of receipt.
Predicted Protein Size:	43 kDa
Gene Name:	UDP-GlcNAc:betaGal beta-1,3-N-acetylglucosaminyltransferase 3
Database Link:	NP_055071 Entrez Gene 72297 Mouse Entrez Gene 10331 Human Q9Y2A9
Background:	This gene encodes a member of the beta-1,3-N-acetylglucosaminyltransferase family. This enzyme is a type II transmembrane protein and contains a signal anchor that is not cleaved. It prefers the substrates of lacto-N-tetraose and lacto-N-neotetraose, and is involved in the biosynthesis of poly-N-acetyllactosamine chains and the biosynthesis of the backbone structure of dimeric sialyl Lewis a. It plays dominant roles in L-selectin ligand biosynthesis, lymphocyte homing and lymphocyte trafficking. [provided by RefSeq]
Synonyms:	B3GAL-T8; B3GN-T3; B3GNT-3; beta3Gn-T3; HP10328; TMEM3

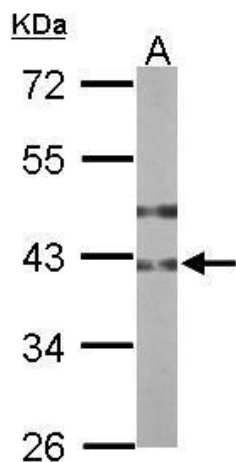


[View online »](#)

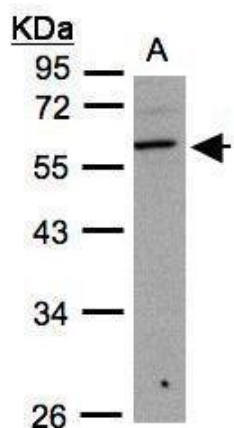
Protein Families: Transmembrane

Protein Pathways: Glycosphingolipid biosynthesis - lacto and neolacto series, Metabolic pathways

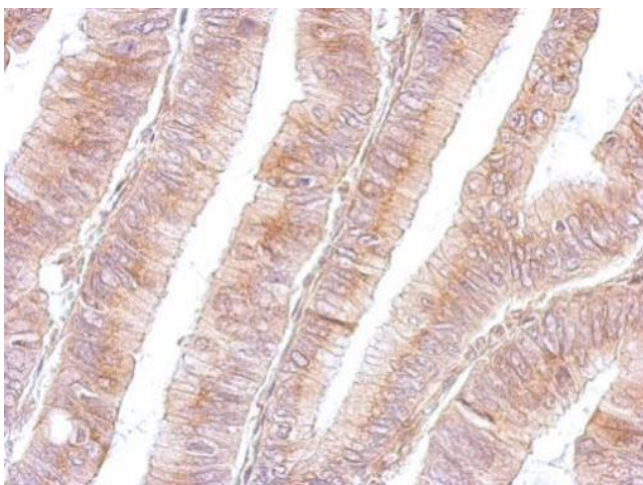
Product images:



Sample (50 ug of whole cell lysate). A: mouse stomach. 10% SDS PAGE. TA308090 diluted at 1:1000.



Sample (30 ug whole cell lysate). A:293T. 10% SDS PAGE. TA308090 diluted at 1:1000



B3GNT3 antibody detects B3GNT3 protein at cytosol on colon by immunohistochemical analysis. Sample: Paraffin-embedded colon. B3GNT3 antibody (TA308090) dilution: 1:500.