

## Product datasheet for **TA308088**

### ASB4 Rabbit Polyclonal Antibody

#### Product data:

Product Type:	Primary Antibodies
Applications:	IHC, WB
Recommended Dilution:	IHC:1:100-1:1000; WB:1:500-1:3000
Reactivity:	Human, Mouse (Predicted: Rat, Bovine)
Host:	Rabbit
Isotype:	IgG
Clonality:	Polyclonal
Immunogen:	Recombinant fragment corresponding to a region within amino acids 29 and 357 of ASB4 (Uniprot ID#Q9Y574)
Formulation:	0.1M Tris, 0.1M Glycine, 10% Glycerol (pH7). 0.01% Thimerosal was added as a preservative.
Concentration:	lot specific
Purification:	Purified by antigen-affinity chromatography.
Conjugation:	Unconjugated
Storage:	Store at -20°C as received.
Stability:	Stable for 12 months from date of receipt.
Predicted Protein Size:	39 kDa
Gene Name:	ankyrin repeat and SOCS box containing 4
Database Link:	<a href="#">NP_057200</a> <a href="#">Entrez Gene 65255 Mouse</a> <a href="#">Entrez Gene 500017 Rat</a> <a href="#">Entrez Gene 51666 Human</a> <a href="#">Q9Y574</a>
Background:	The protein encoded by this gene is a member of the ankyrin repeat and SOCS box-containing (ASB) family of proteins. They contain ankyrin repeat sequence and SOCS box domain. The SOCS box serves to couple suppressor of cytokine signalling (SOCS) proteins and their binding partners with the elongin B and C complex, possibly targeting them for degradation. Multiple alternatively spliced transcript variants have been described for this gene but some of the full length sequences are not known. [provided by RefSeq]
Synonyms:	ASB-4

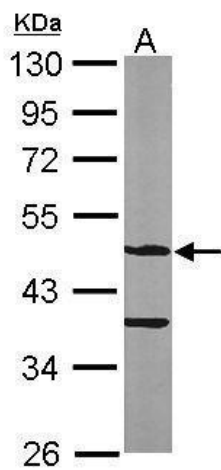


[View online »](#)

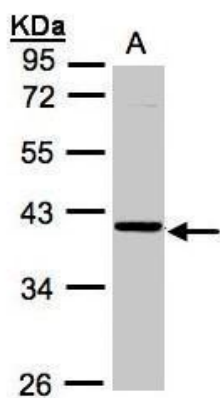
Note: Seq homology of immunogen across species: Rat (94%), Bovine (96%)

Protein Families: Druggable Genome

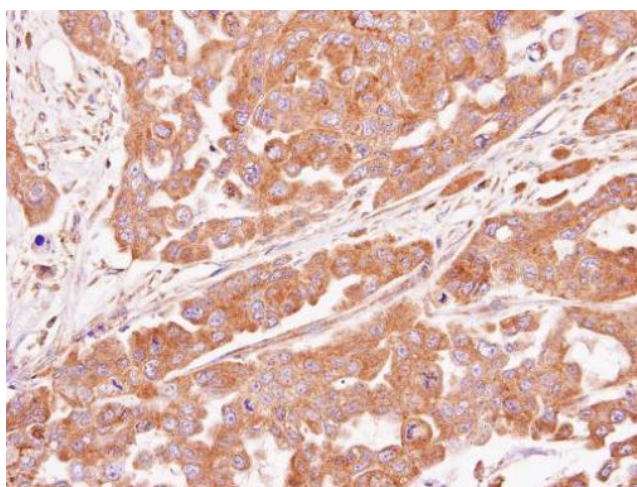
### Product images:



Sample (50 ug of whole cell lysate). A: Mouse brain. 10% SDS PAGE. TA308088 diluted at 1:1000.



Sample (30ug whole cell lysate). A:A431. 10% SDS PAGE. TA308088 diluted at 1:1000



Immunohistochemical analysis of paraffin-embedded OVCAR3 xenograft, using ASB4 (TA308088) antibody at 1:100 dilution.