

Product datasheet for **TA308087**

TUBGCP2 Rabbit Polyclonal Antibody

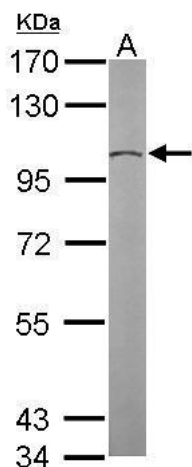
Product data:

Product Type:	Primary Antibodies
Applications:	IF, IHC, WB
Recommended Dilution:	ICC/IF:1:100-1:1000; IHC:1:100-1:1000; WB:1:500-1:3000
Reactivity:	Human, Mouse
Host:	Rabbit
Isotype:	IgG
Clonality:	Polyclonal
Immunogen:	Recombinant fragment corresponding to a region within amino acids 1 and 226 of GCP2 (Uniprot ID#Q9BSJ2)
Formulation:	0.1M Tris, 0.1M Glycine, 10% Glycerol (pH7). 0.01% Thimerosal was added as a preservative.
Concentration:	lot specific
Purification:	Purified by antigen-affinity chromatography.
Conjugation:	Unconjugated
Storage:	Store at -20°C as received.
Stability:	Stable for 12 months from date of receipt.
Predicted Protein Size:	103 kDa
Gene Name:	tubulin gamma complex associated protein 2
Database Link:	NP_006650 Entrez Gene 74237 Mouse Entrez Gene 10844 Human Q9BSJ2
Synonyms:	GCP-2; GCP2; Grip103; h103p; hGCP2; hSpc97; SPBC97; Spc97p
Protein Families:	Druggable Genome

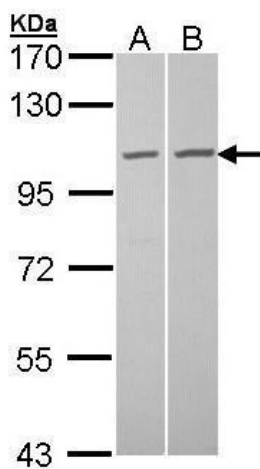


[View online »](#)

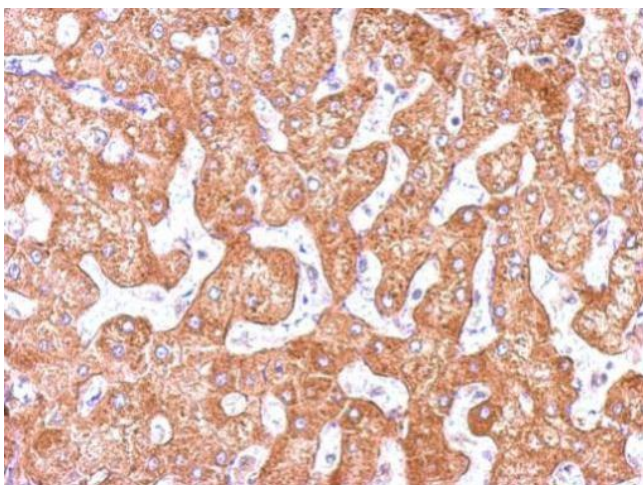
Product images:



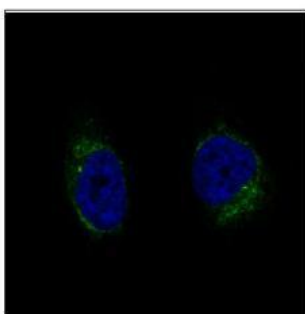
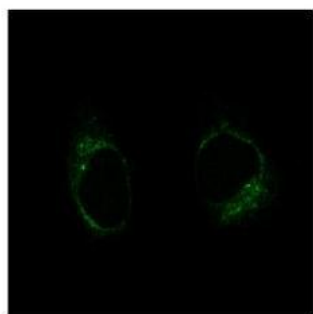
Sample (30 ug of whole cell lysate). A: NIH-3T3. 7.5% SDS PAGE. TA308087 diluted at 1:2000.



Sample (30 ug of whole cell lysate). A: A431. B: HeLa. 7.5% SDS PAGE. TA308087 diluted at 1:1000.



Immunohistochemical analysis of paraffin-embedded Hepatoma, using GCP2 (TA308087) antibody at 1:500 dilution.



GCP2 antibody [N1N2], N-term detects TUBGCP2 protein at centrosome by confocal immunofluorescent analysis. Sample: HeLa cells were fixed in 4% paraformaldehyde at RT for 15 min. Green: TUBGCP2 protein stained by GCP2 antibody [N1N2], N-term (TA308087) dil