

Product datasheet for **TA308086**

PRPS1L1 Rabbit Polyclonal Antibody

Product data:

Product Type:	Primary Antibodies
Applications:	IF, WB
Recommended Dilution:	ICC/IF:1:100-1:1000; WB:1:500-1:3000
Reactivity:	Human
Host:	Rabbit
Isotype:	IgG
Clonality:	Polyclonal
Immunogen:	Recombinant fragment corresponding to a region within amino acids 1 and 318 of PRPS1L1 (Uniprot ID#P21108)
Formulation:	0.1M Tris, 0.1M Glycine, 10% Glycerol (pH7). 0.01% Thimerosal was added as a preservative.
Concentration:	lot specific
Purification:	Purified by antigen-affinity chromatography.
Conjugation:	Unconjugated
Storage:	Store at -20°C as received.
Stability:	Stable for 12 months from date of receipt.
Predicted Protein Size:	35 kDa
Gene Name:	phosphoribosyl pyrophosphate synthetase 1-like 1
Database Link:	NP_787082 Entrez Gene 221823 Human P21108
Background:	This intronless gene is specifically expressed in the testis, and encodes a protein that is highly homologous to the two subunits of phosphoribosylpyrophosphate synthetase encoded by human X-linked genes, PRPS1 and PRPS2. These enzymes convert pyrimidine, purine or pyridine bases to the corresponding ribonucleoside monophosphates. In vitro transcription/translation and site-directed mutagenesis studies indicate that translation of this mRNA initiates exclusively at a non-AUG (ACG) codon. [provided by RefSeq]
Synonyms:	PRPS1; PRPS3; PRPSL; PRS-III

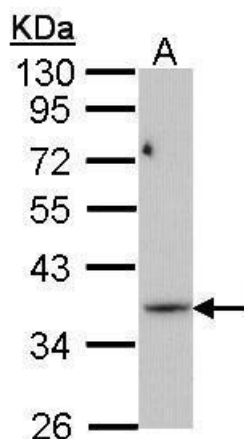


[View online »](#)

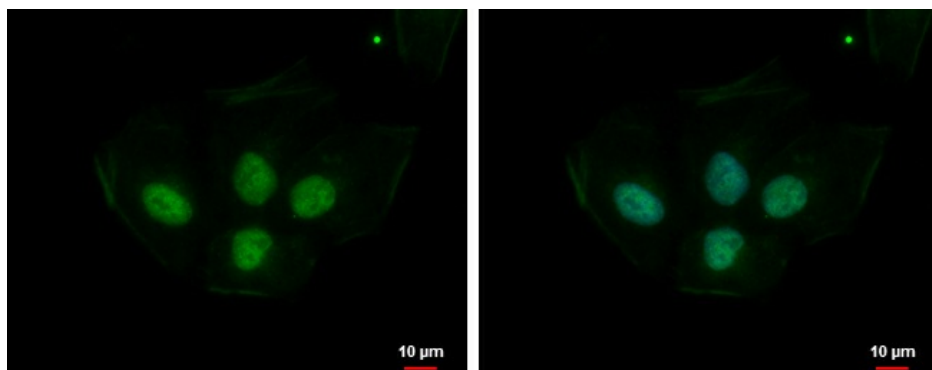
Protein Families: Druggable Genome

Protein Pathways: Metabolic pathways, Pentose phosphate pathway, Purine metabolism

Product images:



Sample (30 ug of whole cell lysate). A: Molt-4.
10% SDS PAGE. TA308086 diluted at 1:1000.



PRPS1L1 antibody detects PRPS1L1 protein at nucleus by immunofluorescent analysis. Sample: NT2D1 cells were fixed in 4% paraformaldehyde at RT for 15 min. Green: PRPS1L1 protein stained by PRPS1L1 antibody (TA308086) diluted at 1:500. Blue: Hoechst 33342