

Product datasheet for **TA308085**

POLR3A Rabbit Polyclonal Antibody

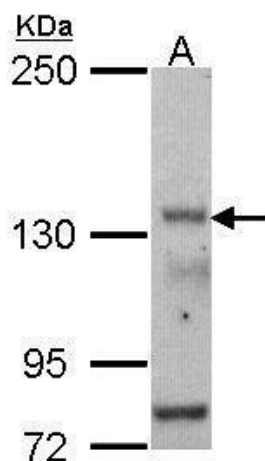
Product data:

| | |
|--------------------------------|---|
| Product Type: | Primary Antibodies |
| Applications: | IF, WB |
| Recommended Dilution: | ICC/IF:1:100-1:1000; WB:1:500-1:3000 |
| Reactivity: | Human (Predicted: Mouse, Chicken, Xenopus, Bovine, X. tropicalis) |
| Host: | Rabbit |
| Isotype: | IgG |
| Clonality: | Polyclonal |
| Immunogen: | Recombinant fragment corresponding to a region within amino acids 182 and 482 of POLR3A (Uniprot ID#O14802) |
| Formulation: | 1XPBS, 1% BSA, 20% Glycerol (pH7). 0.025% ProClin 300 was added as a preservative. |
| Concentration: | lot specific |
| Purification: | Purified by antigen-affinity chromatography. |
| Conjugation: | Unconjugated |
| Storage: | Store at -20°C as received. |
| Stability: | Stable for 12 months from date of receipt. |
| Predicted Protein Size: | 156 kDa |
| Gene Name: | polymerase (RNA) III subunit A |
| Database Link: | NP_008986 Entrez Gene 218832 Mouse Entrez Gene 11128 Human O14802 |
| Synonyms: | ADDH; HLD7; hRPC155; RPC1; RPC155 |
| Note: | Seq homology of immunogen across species: Mouse (97%), Chicken (97%), Xenopus laevis (94%), Bovine (98%), Xenopus tropicalis (94%) |
| Protein Families: | Transcription Factors |
| Protein Pathways: | Cytosolic DNA-sensing pathway, Metabolic pathways, Purine metabolism, Pyrimidine metabolism, RNA polymerase |

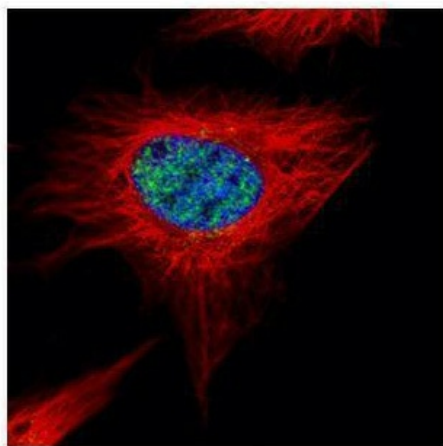


[View online »](#)

Product images:



Sample (30 ug of whole cell lysate). A: HCT116. 5% SDS PAGE. TA308085 diluted at 1:500.



Confocal immunofluorescence analysis (Olympus FV10i) of paraformaldehyde-fixed HeLa, using POLR3A (TA308085) antibody (Green) at 1:500 dilution. Alpha-tubulin filaments were labeled with anti-alpha tubulin antibody (Red) at 1:2000.