

Product datasheet for **TA308080**

Thrombomodulin (THBD) Rabbit Polyclonal Antibody

Product data:

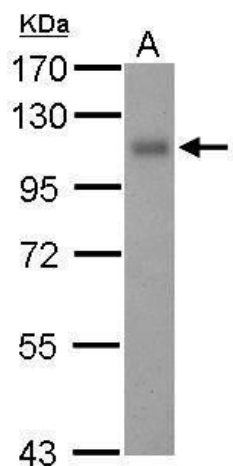
Product Type:	Primary Antibodies
Applications:	IF, IHC, WB
Recommended Dilution:	ICC/IF:1:100-1:1000; IHC:1:100-1:1000; WB:1:500-1:3000
Reactivity:	Human
Host:	Rabbit
Isotype:	IgG
Clonality:	Polyclonal
Immunogen:	Synthetic peptide corresponding to a region within amino acids 512 and 575 of Thrombomodulin (Uniprot ID#P07204)
Formulation:	0.1M Tris, 0.1M Glycine, 10% Glycerol (pH7). 0.01% Thimerosal was added as a preservative.
Concentration:	lot specific
Purification:	Purified by antigen-affinity chromatography.
Conjugation:	Unconjugated
Storage:	Store at -20°C as received.
Stability:	Stable for 12 months from date of receipt.
Predicted Protein Size:	60 kDa
Gene Name:	thrombomodulin
Database Link:	NP_000352 Entrez Gene 7056 Human P07204
Background:	The protein encoded by this intronless gene is an endothelial-specific type I membrane receptor that binds thrombin. This binding results in the activation of protein C, which degrades clotting factors Va and VIIIa and reduces the amount of thrombin generated. Mutations in this gene are a cause of thromboembolic disease, also known as inherited thrombophilia. [provided by RefSeq]
Synonyms:	AHUS6; BDCA3; CD141; THPH12; THRM; TM
Protein Families:	Druggable Genome, Transmembrane



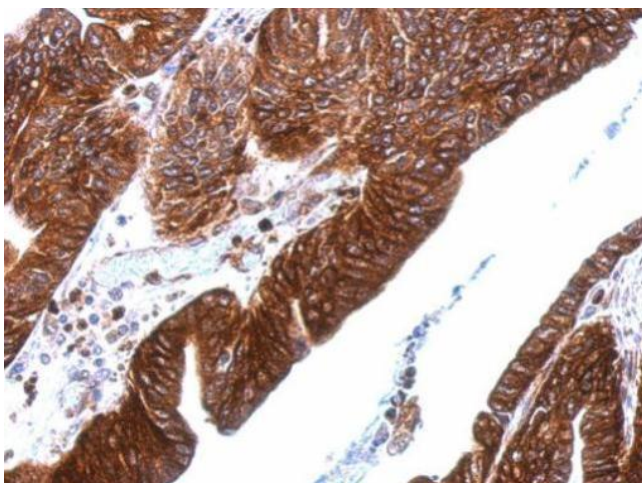
[View online »](#)

Protein Pathways: Complement and coagulation cascades

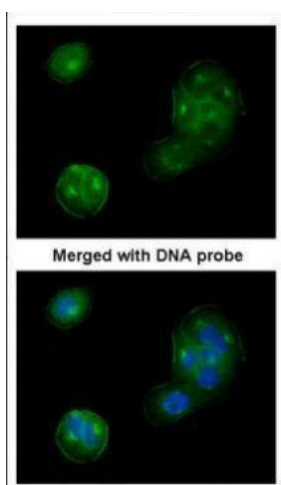
Product images:



Sample (30 ug of whole cell lysate). A: THP-1. 7.5% SDS PAGE. TA308080 diluted at 1:500.



Thrombomodulin antibody [C3], C-term detects THBD protein at cytosol and membrane on gastric carcinoma by immunohistochemical analysis. Sample: Paraffin-embedded gastric carcinoma. Thrombomodulin antibody [C3], C-term (TA308080) dilution: 1:500.



Immunofluorescence analysis of paraformaldehyde-fixed A549, using Thrombomodulin (CD141) (TA308080) antibody at 1:200 dilution.