

Product datasheet for **TA308079**

Rab2 (RAB2A) Rabbit Polyclonal Antibody

Product data:

Product Type:	Primary Antibodies
Applications:	IHC, WB
Recommended Dilution:	IHC:1:100-1:1000; WB:1:500-1:3000
Reactivity:	Human (Predicted: Dog, Rabbit, Chicken, Chimpanzee, Rhesus Monkey)
Host:	Rabbit
Isotype:	IgG
Clonality:	Polyclonal
Immunogen:	Synthetic peptide corresponding to a region within amino acids 148 and 212 of RAB2A (Uniprot ID#P61019)
Formulation:	0.1M Tris, 0.1M Glycine, 10% Glycerol (pH7). 0.01% Thimerosal was added as a preservative.
Concentration:	lot specific
Purification:	Purified by antigen-affinity chromatography.
Conjugation:	Unconjugated
Storage:	Store at -20°C as received.
Stability:	Stable for 12 months from date of receipt.
Predicted Protein Size:	24 kDa
Gene Name:	RAB2A, member RAS oncogene family
Database Link:	NP_002856 Entrez Gene 404009 Dog Entrez Gene 5862 Human P61019
Background:	Members of the Rab protein family are nontransforming monomeric GTP-binding proteins of the Ras superfamily that contain 4 highly conserved regions involved in GTP binding and hydrolysis. Rabs are prenylated, membrane-bound proteins involved in vesicular fusion and trafficking. The mammalian RAB proteins show striking similarities to the <i>S. cerevisiae</i> YPT1 and SEC4 proteins, Ras-related GTP-binding proteins involved in the regulation of secretion. [supplied by OMIM]
Synonyms:	LHX; RAB2

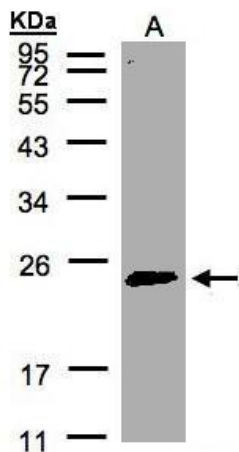


[View online »](#)

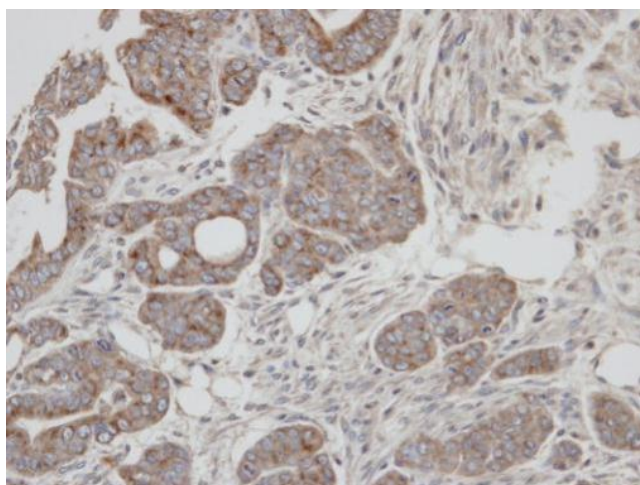
Note: Seq homology of immunogen across species: Dog (100%), Rabbit (100%), Chicken (100%), Rhesus Monkey (100%), Chimpanzee (100%)

Protein Families: Druggable Genome

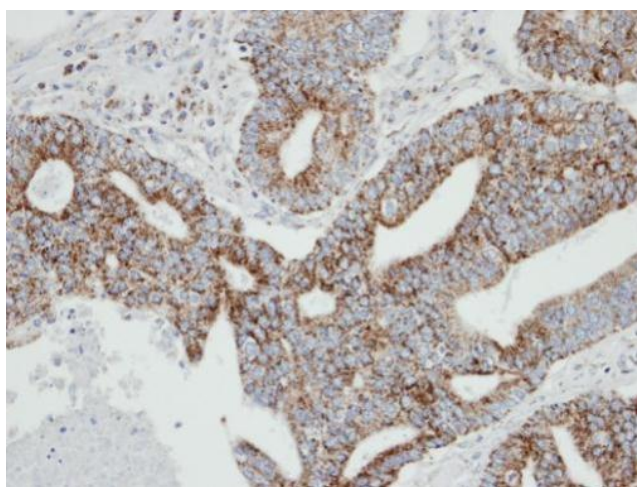
Product images:



Sample (30 ug of whole cell lysate). A:HeLa S3.
12% SDS PAGE. TA308079 diluted at 1:500



Immunohistochemical analysis of paraffin-embedded N87 xenograft, using RAB2A (TA308079) antibody at 1:100 dilution.



Immunohistochemical analysis of paraffin-embedded endometrial OCVA, using RAB2A (TA308079) antibody at 1:100 dilution.