

Product datasheet for **TA308074**

Coronin 3 (CORO1C) Rabbit Polyclonal Antibody

Product data:

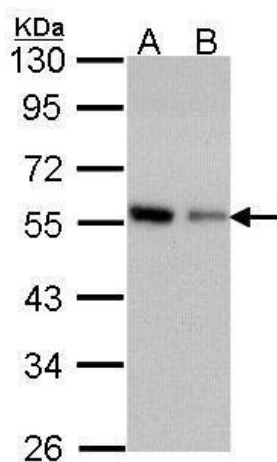
Product Type:	Primary Antibodies
Applications:	IF, IHC, WB
Recommended Dilution:	ICC/IF:1:100-1:1000; IHC:1:100-1:1000; WB:1:500-1:3000
Reactivity:	Human (Predicted: Rat, Chicken, Bovine, Rhesus Monkey, Mouse)
Host:	Rabbit
Isotype:	IgG
Clonality:	Polyclonal
Immunogen:	Synthetic peptide corresponding to a region within amino acids 411 and 474 of Coronin 1C (Uniprot ID#Q9ULV4)
Formulation:	1XPBS, 1% BSA, 20% Glycerol (pH7). 0.01% Thimerosal was added as a preservative.
Concentration:	lot specific
Purification:	Purified by antigen-affinity chromatography.
Conjugation:	Unconjugated
Storage:	Store at -20°C as received.
Stability:	Stable for 12 months from date of receipt.
Predicted Protein Size:	53 kDa
Gene Name:	coronin 1C
Database Link:	NP_055140 Entrez Gene 23790 Mouse Entrez Gene 501841 Rat Entrez Gene 23603 Human Q9ULV4
Background:	This gene encodes a member of the WD repeat protein family. WD repeats are minimally conserved regions of approximately 40 amino acids typically bracketed by gly-his and trp-aspartic acid (GH-WD), which may facilitate formation of heterotrimeric or multiprotein complexes. Members of this family are involved in a variety of cellular processes, including cell cycle progression, signal transduction, apoptosis, and gene regulation. [provided by RefSeq]
Synonyms:	HCRNN4



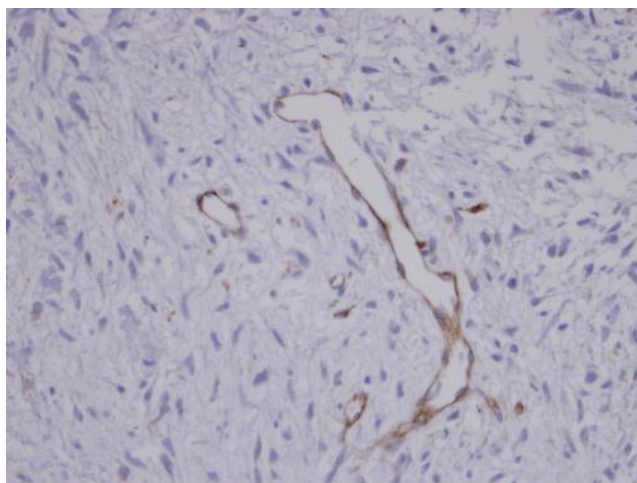
[View online »](#)

Note: Seq homology of immunogen across species: Mouse (86%), Rat (86%), Chicken (100%), Rhesus Monkey (100%), Bovine (100%)

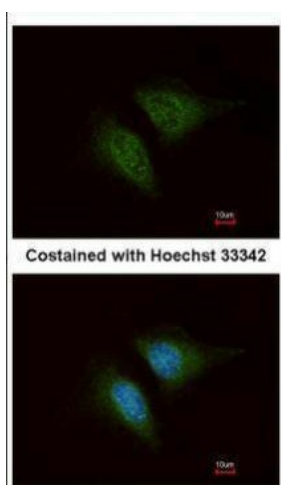
Product images:



Sample (30 ug of whole cell lysate). A: A431. B: H1299. 10% SDS PAGE. TA308074 diluted at 1:1000.



Immunohistochemical analysis of paraffin-embedded Sarcoma meta to brain Blood Vessel, using CORO1C (TA308074) antibody at 1:100 dilution.



Immunofluorescence analysis of methanol-fixed HeLa, using Coronin 1C (TA308074) antibody at 1:200 dilution.