

## Product datasheet for **TA308071**

### CBS Rabbit Polyclonal Antibody

#### Product data:

Product Type:	Primary Antibodies
Applications:	IF, IHC, IP, WB
Recommended Dilution:	ICC/IF:1:100-1:1000; IHC:1:100-1:1000; WB:1:500-1:3000
Reactivity:	Human (Predicted: Mouse, Rabbit, Rat, Bovine, X. tropicalis)
Host:	Rabbit
Isotype:	IgG
Clonality:	Polyclonal
Immunogen:	Recombinant fragment corresponding to a region within amino acids 39 and 251 of CBS (Uniprot ID#P35520)
Formulation:	1XPBS, 20% Glycerol (pH7). 0.025% ProClin 300 was added as a preservative.
Purification:	Purified by antigen-affinity chromatography.
Conjugation:	Unconjugated
Storage:	Store at -20°C as received.
Stability:	Stable for 12 months from date of receipt.
Predicted Protein Size:	61 kDa
Gene Name:	cystathionine-beta-synthase
Database Link:	<a href="#">NP_000062</a> <a href="#">Entrez Gene 12411 Mouse</a> <a href="#">Entrez Gene 24250 Rat</a> <a href="#">Entrez Gene 875 Human</a> <a href="#">P35520</a>
Background:	The protein encoded by this gene acts as a homotetramer to catalyze the conversion of homocysteine to cystathionine, the first step in the transsulfuration pathway. The encoded protein is allosterically activated by adenosyl-methionine and uses pyridoxal phosphate as a cofactor. Defects in this gene can cause cystathionine beta-synthase deficiency (CBS), which can lead to homocystinuria. [provided by RefSeq]
Synonyms:	HIP4
Note:	Seq homology of immunogen across species: Mouse (94%), Rabbit (95%), Rat (94%), Bovine (94%), Xenopus tropicalis (93%)

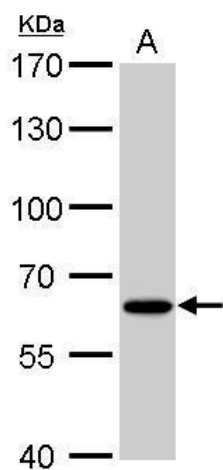


[View online »](#)

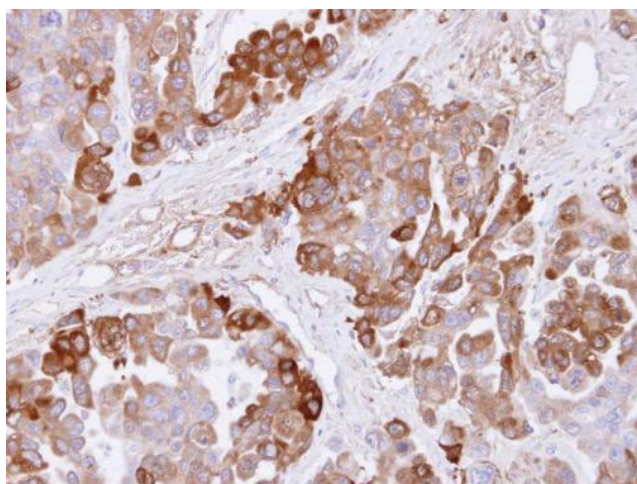
Protein Families: Druggable Genome

Protein Pathways: Cysteine and methionine metabolism, Glycine, serine and threonine metabolism, Metabolic pathways, Selenoamino acid metabolism

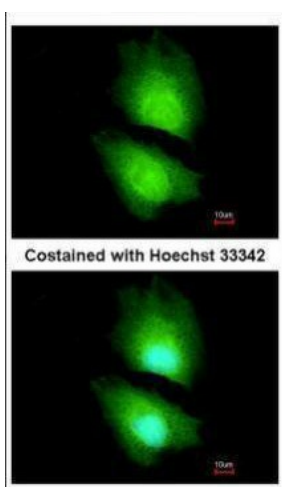
### Product images:



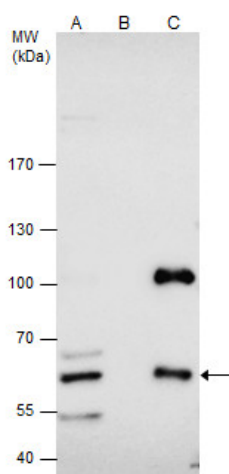
CBS antibody detects CBS protein by Western blot analysis. A. 30 ug 293T whole cell lysate/extract. 7.5 % SDS-PAGE. CBS antibody (TA308071) dilution: 1:1000



Immunohistochemical analysis of paraffin-embedded OVCAR3 xenograft, using CBS (TA308071) antibody at 1:500 dilution.



Immunofluorescence analysis of paraformaldehyde-fixed HeLa, using CBS (TA308071) antibody at 1:200 dilution.



CBS antibody immunoprecipitates CBS protein in IP experiments. IP samples: HepG2 whole cell extract. A. 50 µg HepG2 whole cell extract. B. Control with 4 µg of preimmune Rabbit IgG. C. Immunoprecipitation of CBS protein by 4 µg CBS antibody (TA308071). 7.