

## Product datasheet for **TA308067**

### CMTM5 Rabbit Polyclonal Antibody

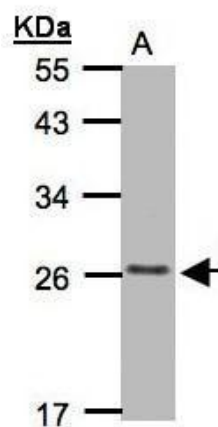
#### Product data:

Product Type:	Primary Antibodies
Applications:	WB
Recommended Dilution:	WB:1:500-1:3000
Reactivity:	Human
Host:	Rabbit
Isotype:	IgG
Clonality:	Polyclonal
Immunogen:	Synthetic peptide corresponding to a region within amino acids 159 and 223 of CKLFSF5 (Uniprot ID#Q96DZ9)
Formulation:	0.1M Tris, 0.1M Glycine, 10% Glycerol (pH7). 0.01% Thimerosal was added as a preservative.
Concentration:	lot specific
Purification:	Purified by antigen-affinity chromatography.
Conjugation:	Unconjugated
Storage:	Store at -20°C as received.
Stability:	Stable for 12 months from date of receipt.
Predicted Protein Size:	17 kDa
Gene Name:	CKLF like MARVEL transmembrane domain containing 5
Database Link:	<a href="#">NP_001032365</a> <a href="#">Entrez Gene 116173 Human</a> <a href="#">Q96DZ9</a>
Background:	This gene belongs to the chemokine-like factor gene superfamily. This family of genes encodes multi-pass membrane proteins that are similar to both the chemokine and the transmembrane 4 superfamilies of signaling molecules. Alternate transcriptional splice variants of this gene, encoding different isoforms, have been characterized. [provided by RefSeq]
Synonyms:	CKLFSF5
Protein Families:	Transmembrane



[View online »](#)

## Product images:



Sample (30 ug of whole cell lysate). A: MOLT4 whole cell lysate. 12% SDS PAGE. TA308067 diluted at 1:1000