

Product datasheet for **TA308065**

MMACHC Rabbit Polyclonal Antibody

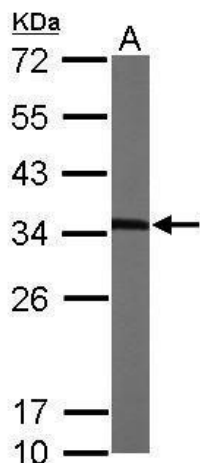
Product data:

Product Type:	Primary Antibodies
Applications:	IF, IHC, WB
Recommended Dilution:	ICC/IF:1:100-1:1000; IHC:1:100-1:1000; WB:1:500-1:3000
Reactivity:	Human, Mouse (Predicted: Bovine)
Host:	Rabbit
Isotype:	IgG
Clonality:	Polyclonal
Immunogen:	Recombinant fragment corresponding to a region within amino acids 1 and 218 of MMACHC (Uniprot ID#Q9Y4U1)
Formulation:	0.1M Tris, 0.1M Glycine, 10% Glycerol (pH7). 0.01% Thimerosal was added as a preservative.
Concentration:	lot specific
Purification:	Purified by antigen-affinity chromatography.
Conjugation:	Unconjugated
Storage:	Store at -20°C as received.
Stability:	Stable for 12 months from date of receipt.
Predicted Protein Size:	32 kDa
Gene Name:	methyilmalonic aciduria (cobalamin deficiency) cblC type, with homocystinuria
Database Link:	NP_056321 Entrez Gene 67096 Mouse Entrez Gene 25974 Human Q9Y4U1
Synonyms:	cblC
Note:	Seq homology of immunogen across species: Bovine (90%)

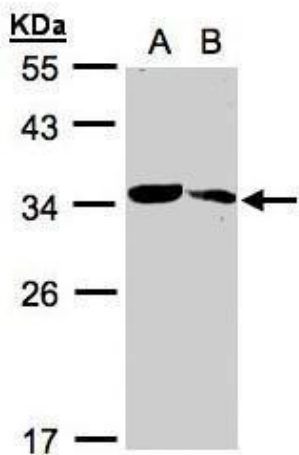


[View online »](#)

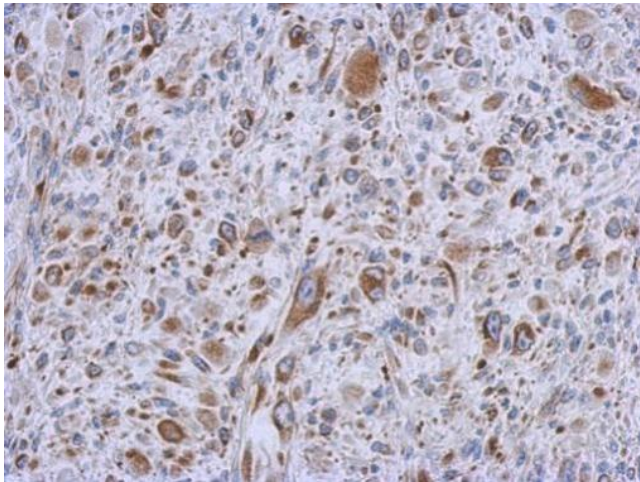
Product images:



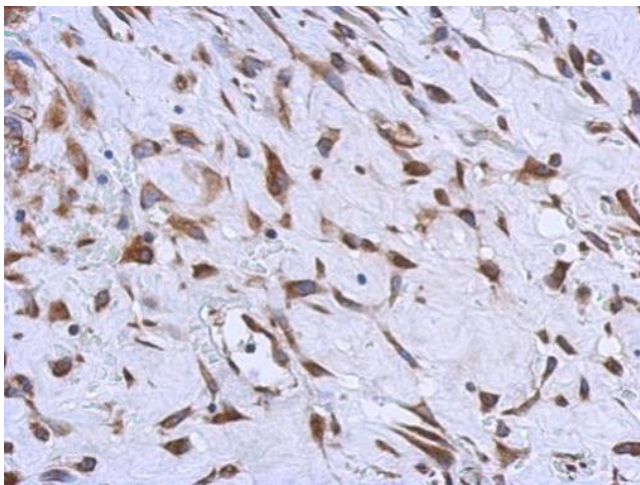
Sample (50 ug of whole cell lysate). A: Mouse brain. 12% SDS PAGE. TA308065 diluted at 1:1000.



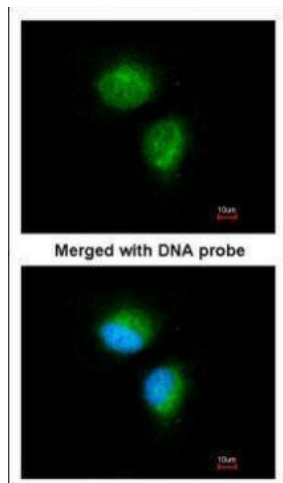
Sample (30 ug whole cell lysate). A:293T. B:Raji. 12% SDS PAGE. TA308065 diluted at 1:1000



Immunohistochemical analysis of paraffin-embedded C2C12 xenograft, using MMACHC (TA308065) antibody at 1:500 dilution.



Immunohistochemical analysis of paraffin-embedded Hepatoma, using MMACHC (TA308065) antibody at 1:500 dilution.



Immunofluorescence analysis of paraformaldehyde-fixed HeLa, using MMACHC (TA308065) antibody at 1:100 dilution.