

Product datasheet for **TA308063**

OSGEP Rabbit Polyclonal Antibody

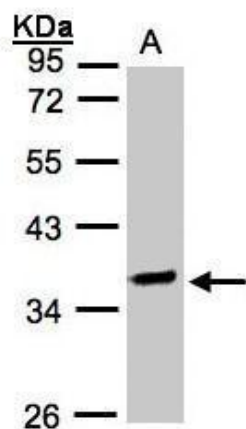
Product data:

Product Type:	Primary Antibodies
Applications:	IHC, WB
Recommended Dilution:	IHC:1:100-1:1000; WB:1:500-1:3000
Reactivity:	Human (Predicted: Mouse, Rat, Xenopus, Bovine, X. tropicalis)
Host:	Rabbit
Isotype:	IgG
Clonality:	Polyclonal
Immunogen:	Recombinant fragment corresponding to a region within amino acids 140 and 335 of OSGEP (Uniprot ID#Q9NPF4)
Formulation:	0.1M Tris, 0.1M Glycine, 10% Glycerol (pH7). 0.01% Thimerosal was added as a preservative.
Concentration:	lot specific
Purification:	Purified by antigen-affinity chromatography.
Conjugation:	Unconjugated
Storage:	Store at -20°C as received.
Stability:	Stable for 12 months from date of receipt.
Predicted Protein Size:	36 kDa
Gene Name:	O-sialoglycoprotein endopeptidase
Database Link:	NP_060277 Entrez Gene 66246 Mouse Entrez Gene 290028 Rat Entrez Gene 55644 Human Q9NPF4
Synonyms:	GCPL1; KAE1; OSGEP1; PRSMG1
Note:	Seq homology of immunogen across species: Mouse (92%), Rat (95%), Xenopus laevis (85%), Bovine (96%), Xenopus tropicalis (86%)
Protein Families:	Druggable Genome, Protease

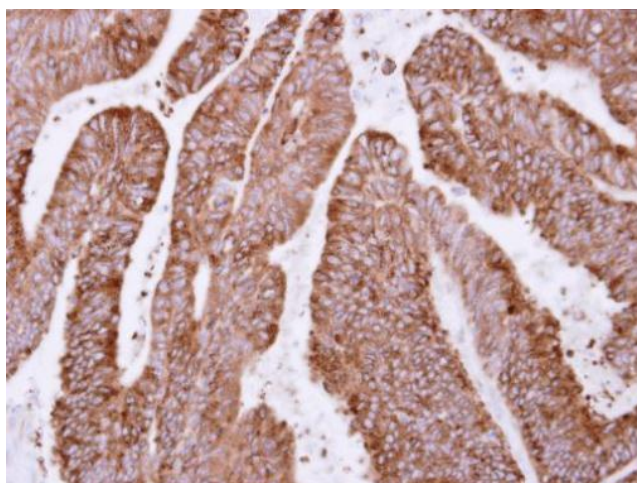


[View online »](#)

Product images:



Sample (30 ug whole cell lysate). A:Raji. 10% SDS PAGE. TA308063 diluted at 1:2000



Immunohistochemical analysis of paraffin-embedded Colon ca, using OSGEP (TA308063) antibody at 1:500 dilution.