

Product datasheet for **TA308060**

LIMCH1 Rabbit Polyclonal Antibody

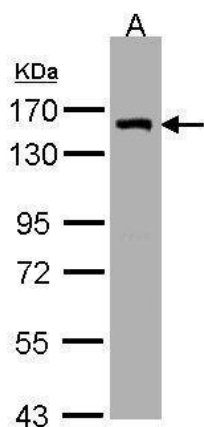
Product data:

Product Type:	Primary Antibodies
Applications:	IHC, WB
Recommended Dilution:	IHC:1:100-1:1000; WB:1:500-1:3000
Reactivity:	Human, Mouse (Predicted: Cow, Zebrafish, Xenopus)
Host:	Rabbit
Isotype:	IgG
Clonality:	Polyclonal
Immunogen:	Recombinant fragment contain a sequence corresponding to a region within amino acids 734 and 1007 of LIMCH1 (Uniprot ID#Q9UPQ0)
Formulation:	1XPBS, 20% Glycerol (pH7). 0.025% ProClin 300 was added as a preservative.
Concentration:	lot specific
Purification:	Purified by antigen-affinity chromatography.
Conjugation:	Unconjugated
Storage:	Store at -20°C as received.
Stability:	Stable for 12 months from date of receipt.
Predicted Protein Size:	119 kDa
Gene Name:	LIM and calponin homology domains 1
Database Link:	NP_001106191 Entrez Gene 77569 Mouse Entrez Gene 22998 Human Q9UPQ0
Synonyms:	LIMCH1A; LMO7B
Note:	Seq homology of immunogen across species: Cow (87%), Zebrafish (45%), Xenopus laevis (84%)

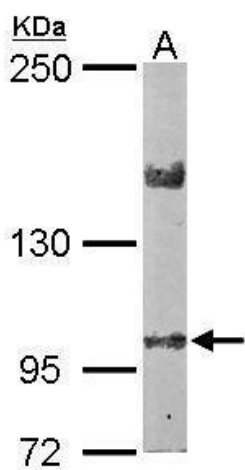


[View online »](#)

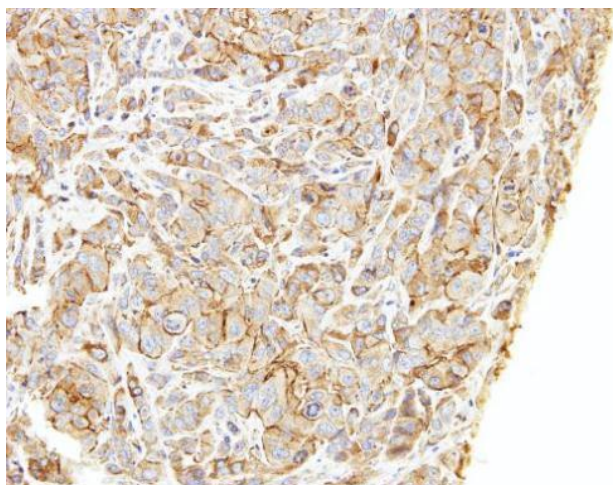
Product images:



Sample (30ug whole cell lysate). A:H1299. 7.5% SDS PAGE. TA308060 diluted at 1:3000



Sample (50 ug of whole cell lysate). A: Mouse brain. 5% SDS PAGE. TA308060 diluted at 1:2000.



Immunohistochemical analysis of paraffin-embedded A549 xenograft, using LIMCH1 (TA308060) antibody at 1:500 dilution.