

Product datasheet for **TA308059**

BBS10 Rabbit Polyclonal Antibody

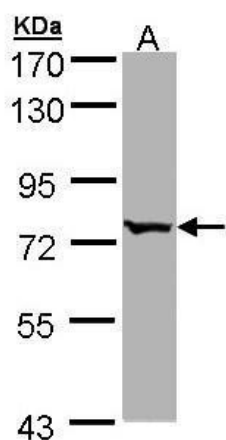
Product data:

Product Type:	Primary Antibodies
Applications:	IHC, WB
Recommended Dilution:	IHC:1:100-1:1000; WB:1:500-1:3000
Reactivity:	Human
Host:	Rabbit
Isotype:	IgG
Clonality:	Polyclonal
Immunogen:	Recombinant fragment corresponding to a region within amino acids 182 and 443 of BBS10 (Uniprot ID#Q8TAM1)
Formulation:	0.1M Tris, 0.1M Glycine, 10% Glycerol (pH7). 0.01% Thimerosal was added as a preservative.
Purification:	Purified by antigen-affinity chromatography.
Conjugation:	Unconjugated
Storage:	Store at -20°C as received.
Stability:	Stable for 12 months from date of receipt.
Predicted Protein Size:	81 kDa
Gene Name:	Bardet-Biedl syndrome 10
Database Link:	NP_078961 Entrez Gene 79738 Human Q8TAM1
Synonyms:	C12orf58

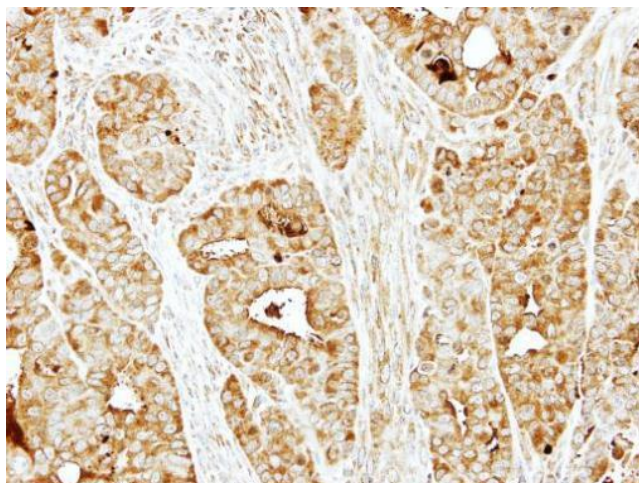


[View online »](#)

Product images:



Sample (30 ug of whole cell lysate). A: Hep G2.
7.5% SDS PAGE. TA308059 diluted at 1:1000



Immunohistochemical analysis of paraffin-
embedded NCI-N87 xenograft, using BBS10
(TA308059) antibody at 1:500 dilution.