

## Product datasheet for **TA308058**

### PNPT1 Rabbit Polyclonal Antibody

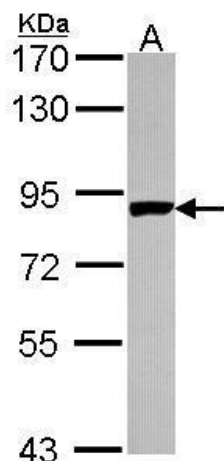
#### Product data:

Product Type:	Primary Antibodies
Applications:	IF, IHC, WB
Recommended Dilution:	ICC/IF:1:100-1:1000; IHC:1:100-1:1000; WB:1:500-1:3000
Reactivity:	Human (Predicted: X. tropicalis)
Host:	Rabbit
Isotype:	IgG
Clonality:	Polyclonal
Immunogen:	Recombinant fragment corresponding to a region within amino acids 1 and 783 of PNPase (Uniprot ID#Q8TCS8)
Formulation:	1XPBS, 1% BSA, 20% Glycerol (pH7). 0.01% Thimerosal was added as a preservative.
Concentration:	lot specific
Purification:	Purified by antigen-affinity chromatography.
Conjugation:	Unconjugated
Storage:	Store at -20°C as received.
Stability:	Stable for 12 months from date of receipt.
Predicted Protein Size:	86 kDa
Gene Name:	polyribonucleotide nucleotidyltransferase 1
Database Link:	<a href="#">NP_149100</a> <a href="#">Entrez Gene 87178 Human</a> <a href="#">Q8TCS8</a>
Background:	PNPT1 is a subunit of the exosome complex, which is involved in 3-prime-to-5-prime exoribonuclease activity for RNA processing and degradation (Raijmakers et al., 2002 [PubMed 12419256]). [supplied by OMIM]
Synonyms:	COXPD13; DFNB70; old-35; OLD35; PNPASE
Note:	Seq homology of immunogen across species: Xenopus tropicalis (80%)
Protein Pathways:	Purine metabolism, Pyrimidine metabolism, RNA degradation

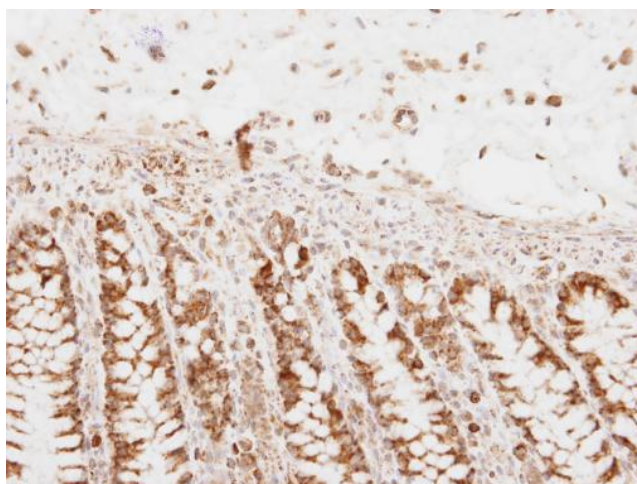


[View online »](#)

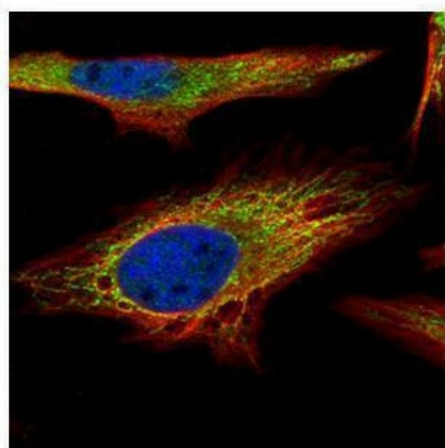
## Product images:



Sample (30 ug of whole cell lysate). A: A431. 7.5% SDS PAGE. TA308058 diluted at 1:1000.



PNPase antibody detects PNPase protein at mitochondria on human normal colon by immunohistochemical analysis. Sample: Paraffin-embedded human normal colon. PNPase antibody (TA308058) dilution: 1:250.



Confocal immunofluorescence analysis (Olympus FV10i) of paraformaldehyde-fixed HeLa, using PNPase (TA308058) antibody (Green) at 1:500 dilution. Alpha-tubulin filaments were labeled with anti-alpha tubulin antibody (Red) at 1:2500.