

Product datasheet for **TA308055**

PANK1 Rabbit Polyclonal Antibody

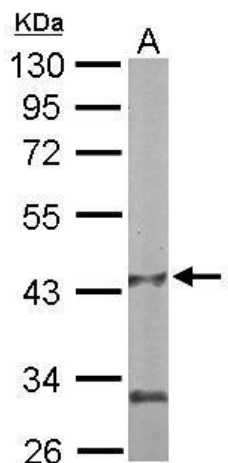
Product data:

Product Type:	Primary Antibodies
Applications:	IF, IHC, WB
Recommended Dilution:	ICC/IF:1:100-1:1000; IHC:1:100-1:1000; WB:1:1000-1:10000
Reactivity:	Human, Mouse (Predicted: Rat)
Host:	Rabbit
Isotype:	IgG
Clonality:	Polyclonal
Immunogen:	Recombinant fragment corresponding to a region within amino acids 207 and 513 of PANK1 (Uniprot ID#Q8TE04)
Formulation:	0.1M Tris, 0.1M Glycine, 10% Glycerol (pH7). 0.01% Thimerosal was added as a preservative.
Concentration:	lot specific
Purification:	Purified by antigen-affinity chromatography.
Conjugation:	Unconjugated
Storage:	Store at -20°C as received.
Stability:	Stable for 12 months from date of receipt.
Predicted Protein Size:	64 kDa
Gene Name:	pantothenate kinase 1
Database Link:	NP_612189 Entrez Gene 75735 Mouse Entrez Gene 294088 Rat Entrez Gene 53354 Human Q8TE04
Background:	This gene encodes a protein belonging to the pantothenate kinase family. Pantothenate kinase is a key regulatory enzyme in the biosynthesis of coenzyme A (CoA) in bacteria and mammalian cells. It catalyzes the first committed step in the universal biosynthetic pathway leading to CoA and is itself subject to regulation through feedback inhibition by CoA. Alternative splicing has been observed at this locus and three variants, each encoding a distinct isoform, have been identified. [provided by RefSeq]
Synonyms:	PANK

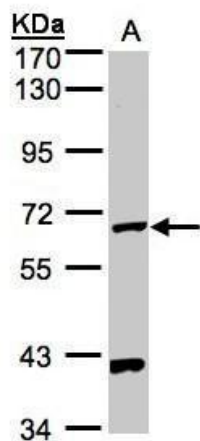


[View online »](#)

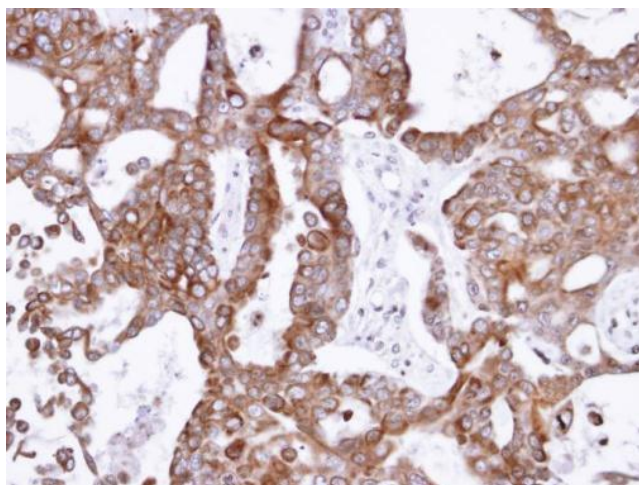
Note: Seq homology of immunogen across species: Rat (98%)
Protein Families: Druggable Genome
Protein Pathways: Metabolic pathways, Pantothenate and CoA biosynthesis

Product images:

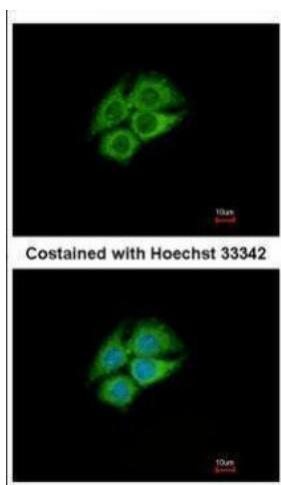
Sample (50 ug of whole cell lysate). A: mouse liver. 10% SDS PAGE. TA308055 diluted at 1:1000.



Sample (30 ug whole cell lysate). A: Hep G2. 7.5% SDS PAGE. TA308055 diluted at 1:5000



Immunohistochemical analysis of paraffin-embedded NCIN87 xenograft, using PANK1 (TA308055) antibody at 1:500 dilution.



Immunofluorescence analysis of methanol-fixed Hep G2, using PANK1 (TA308055) antibody at 1:500 dilution.